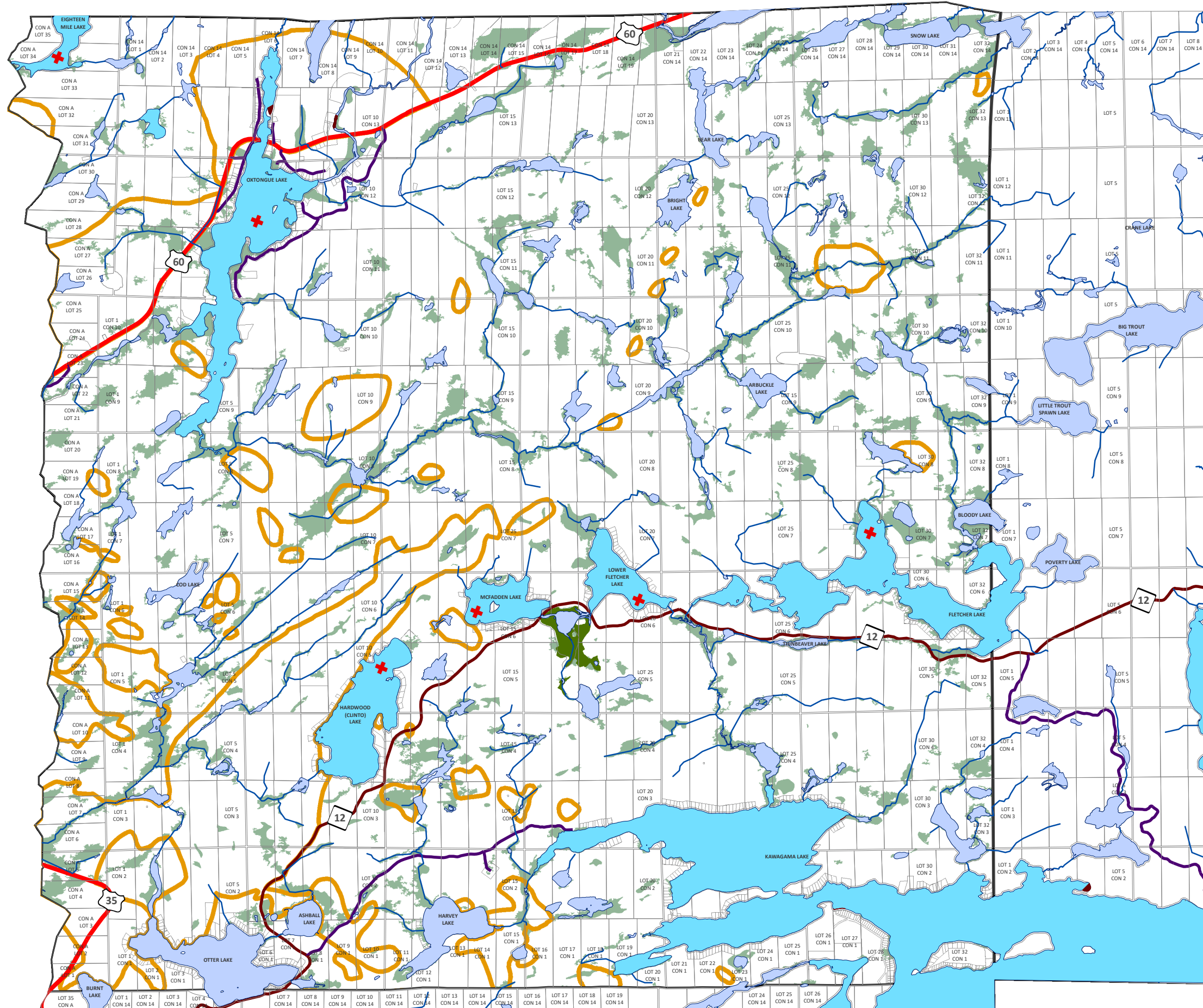
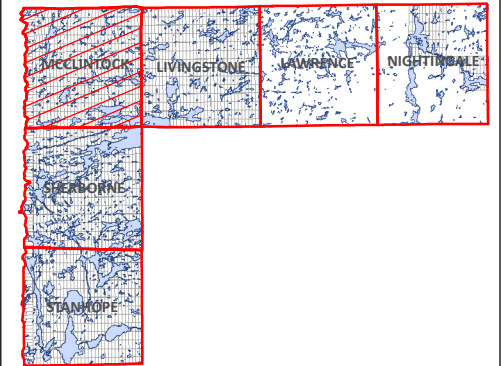


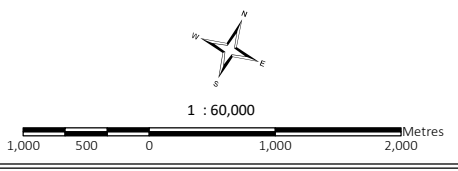
SCHEDULE 'C' - NATURAL HERITAGE FEATURES

GEOGRAPHIC TOWNSHIP OF McCLINTOCK



- Spawning Areas
 - Moose Early Wintering Area
 - Moose Aquatics
 - Deer Wintering Area (Stratum 2)
 - ANSI - Life Science
 - Provincially Significant Wetlands
 - Unevaluated Wetlands
 - Lakes
 - County Road
 - Highway
 - Township Road
- THERMAL WATER TEMPERATURES**
- Cold Water
- CAPACITY LEVELS**
- At Capacity

APPROVED
November 28, 2018



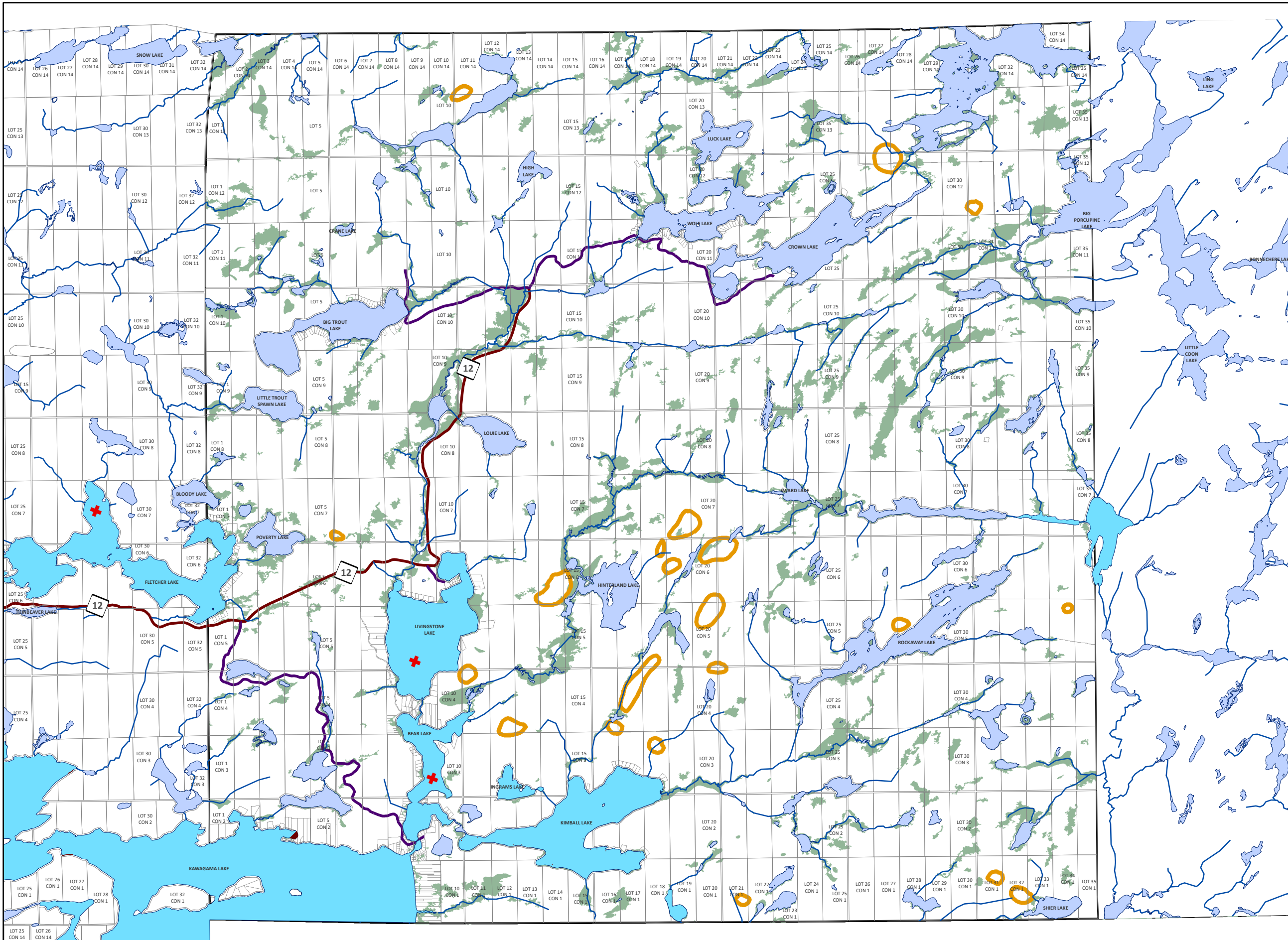
THIS MAP IS FOR ILLUSTRATION PURPOSES ONLY.
THE INFORMATION DISPLAYED ON THESE MAPS HAS BEEN CREATED FROM MINISTRY OF NATURAL RESOURCES, ONTARIO BASE MAPPING & MPAC PROPERTY FABRICS.
WHILE EVERY EFFORT HAS BEEN MADE TO ACCURATELY DEPICT THE INFORMATION,
THIS MAP SHOULD NOT BE RELIED ON AS A PRECISED INDICATOR OF LOCATIONS OF FEATURES OR ROADS.

BASE MAPPING SOURCE:
MINISTRY OF NATURAL RESOURCES - ONTARIO BASE MAPPING
MPAC - MUNICIPAL PROPERTY ASSESSMENT CORPORATION



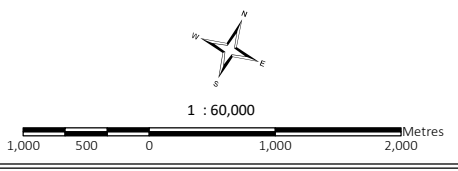
SCHEDULE 'C' - NATURAL HERITAGE FEATURES

GEOGRAPHIC TOWNSHIP OF LIVINGSTONE



- Spawning Areas
 - Moose Early Wintering Area
 - Moose Aquatics
 - Deer Wintering Area (Stratum 2)
 - ANSI - Life Science
 - Provincially Significant Wetlands
 - Unevaluated Wetlands
 - Lakes
 - County Road
 - Highway
 - Township Road
- THERMAL WATER TEMPERATURES**
- Cold Water
- CAPACITY LEVELS**
- At Capacity

APPROVED
November 28, 2018



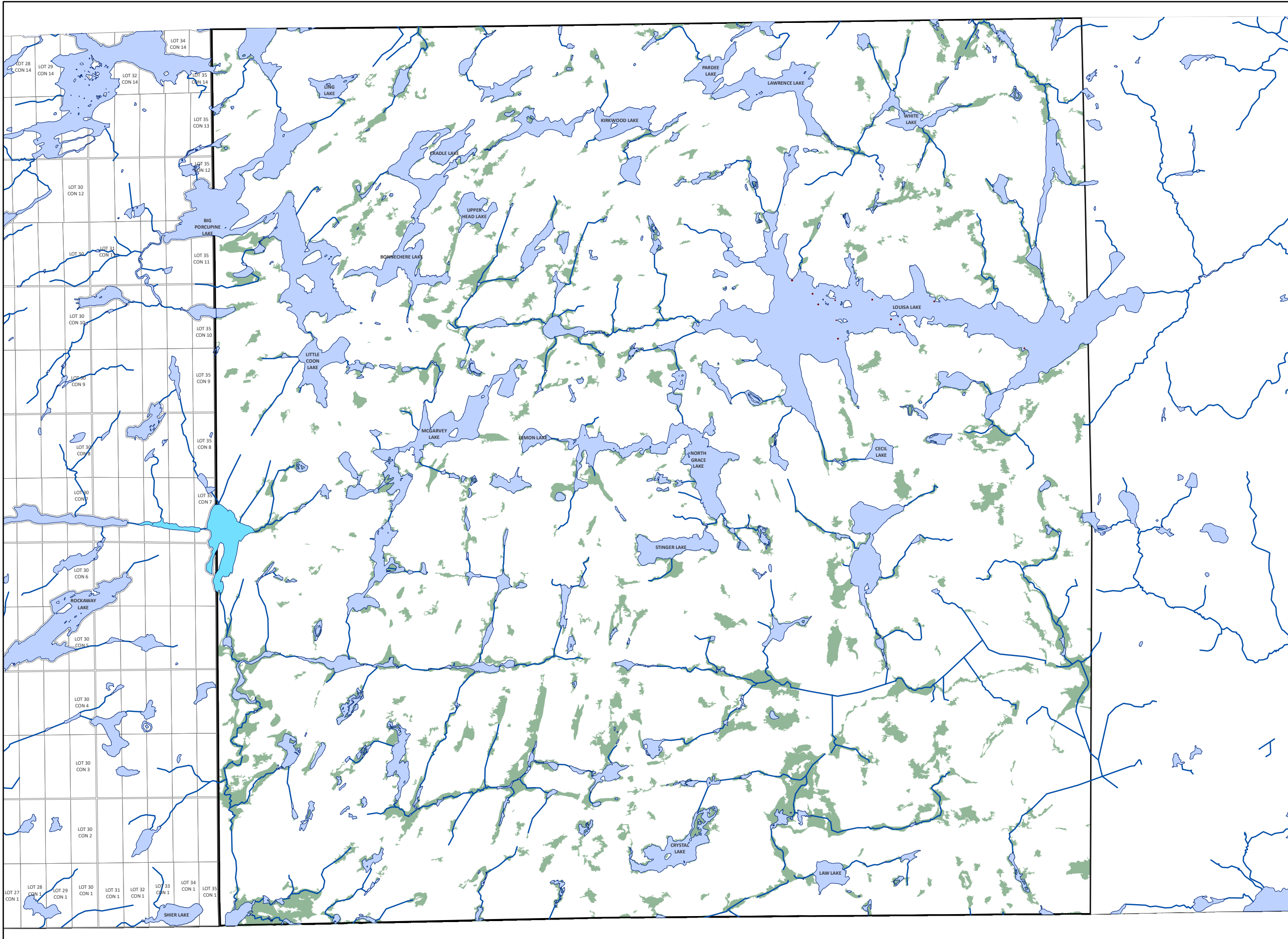
THIS MAP IS FOR ILLUSTRATION PURPOSES ONLY. THE INFORMATION DISPLAYED ON THESE MAPS HAS BEEN CREATED FROM MINISTRY OF NATURAL RESOURCES, ONTARIO BASE MAPPING & MPAFC PROPERTY FABRICS. WHILE EVERY EFFORT HAS BEEN MADE TO ACCURATELY DEPICT THE INFORMATION, THIS MAP SHOULD NOT BE RELIED ON AS A PRECISED INDICATOR OF LOCATIONS OF FEATURES OR ROADS.

BASE MAPPING SOURCE:
MINISTRY OF NATURAL RESOURCES - ONTARIO BASE MAPPING
MPAFC - MUNICIPAL PROPERTY ASSESSMENT CORPORATION



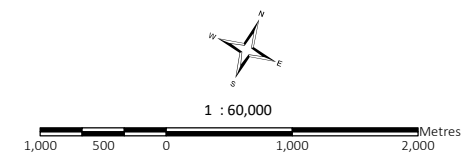
SCHEDULE 'C' - NATURAL HERITAGE FEATURES

GEOGRAPHIC TOWNSHIP OF LAWRENCE



- Spawning Areas
 - Moose Early Wintering Area
 - Moose Aquatics
 - Deer Wintering Area (Stratum 2)
 - ANSI - Life Science
 - Provincially Significant Wetlands
 - Unevaluated Wetlands
 - Lakes
 - County Road
 - Highway
 - Township Road
- THERMAL WATER TEMPERATURES CAPACITY LEVELS
- Cold Water
 - + At Capacity

APPROVED
November 28, 2018



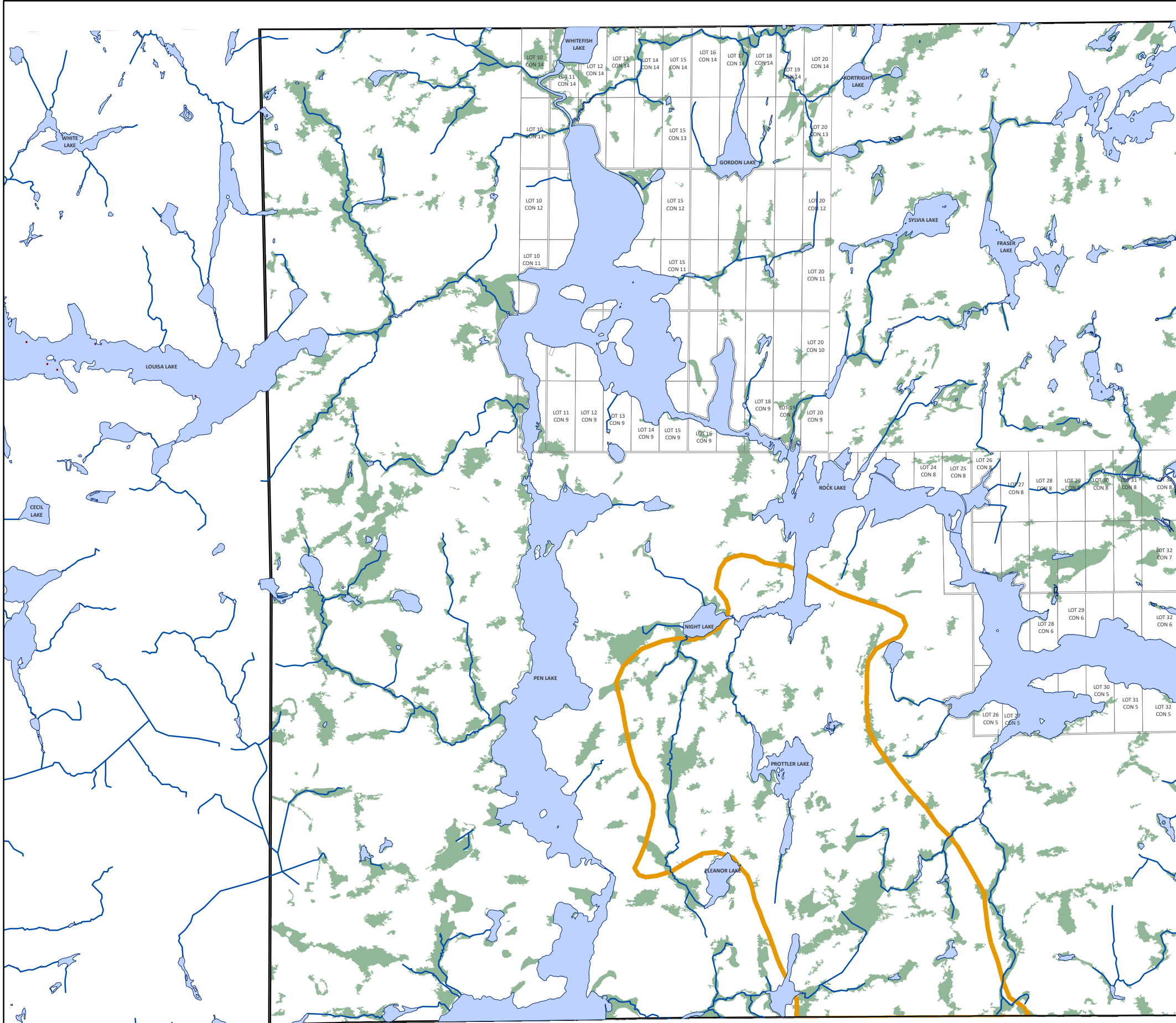
THIS MAP IS FOR ILLUSTRATION PURPOSES ONLY.
THE INFORMATION DISPLAYED ON THESE MAPS HAS BEEN CREATED FROM MINISTRY OF NATURAL RESOURCES, ONTARIO BASE MAPPING & MPMC PROPERTY FABRICS.
WHILE EVERY EFFORT HAS BEEN MADE TO ACCURATELY DEPICT THE INFORMATION,
THIS MAP SHOULD NOT BE RELIED ON AS A PRECISED INDICATOR OF LOCATIONS OF FEATURES OR ROADS.

BASE MAPPING SOURCE:
MINISTRY OF NATURAL RESOURCES - ONTARIO BASE MAPPING
MPMC - MUNICIPAL PROPERTY ASSESSMENT CORPORATION



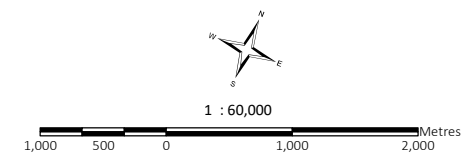
SCHEDULE 'C' - NATURAL HERITAGE FEATURES

GEOGRAPHIC TOWNSHIP OF NIGHTINGALE



- Spawning Areas
 - Moose Early Wintering Area
 - Moose Aquatics
 - Deer Wintering Area (Stratum 2)
 - ANSI - Life Science
 - Provincially Significant Wetlands
 - Unevaluated Wetlands
 - Lakes
 - County Road
 - Highway
 - Township Road
- THERMAL WATER TEMPERATURES CAPACITY LEVELS
- Cold Water
 - At Capacity

APPROVED
November 28, 2018



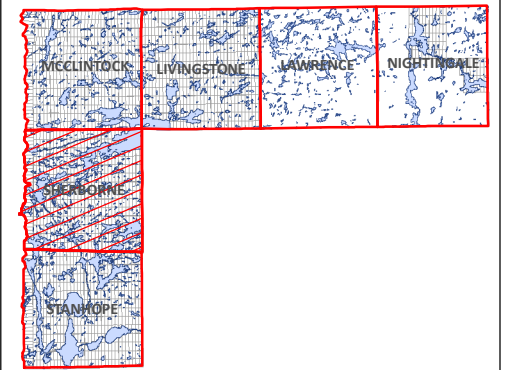
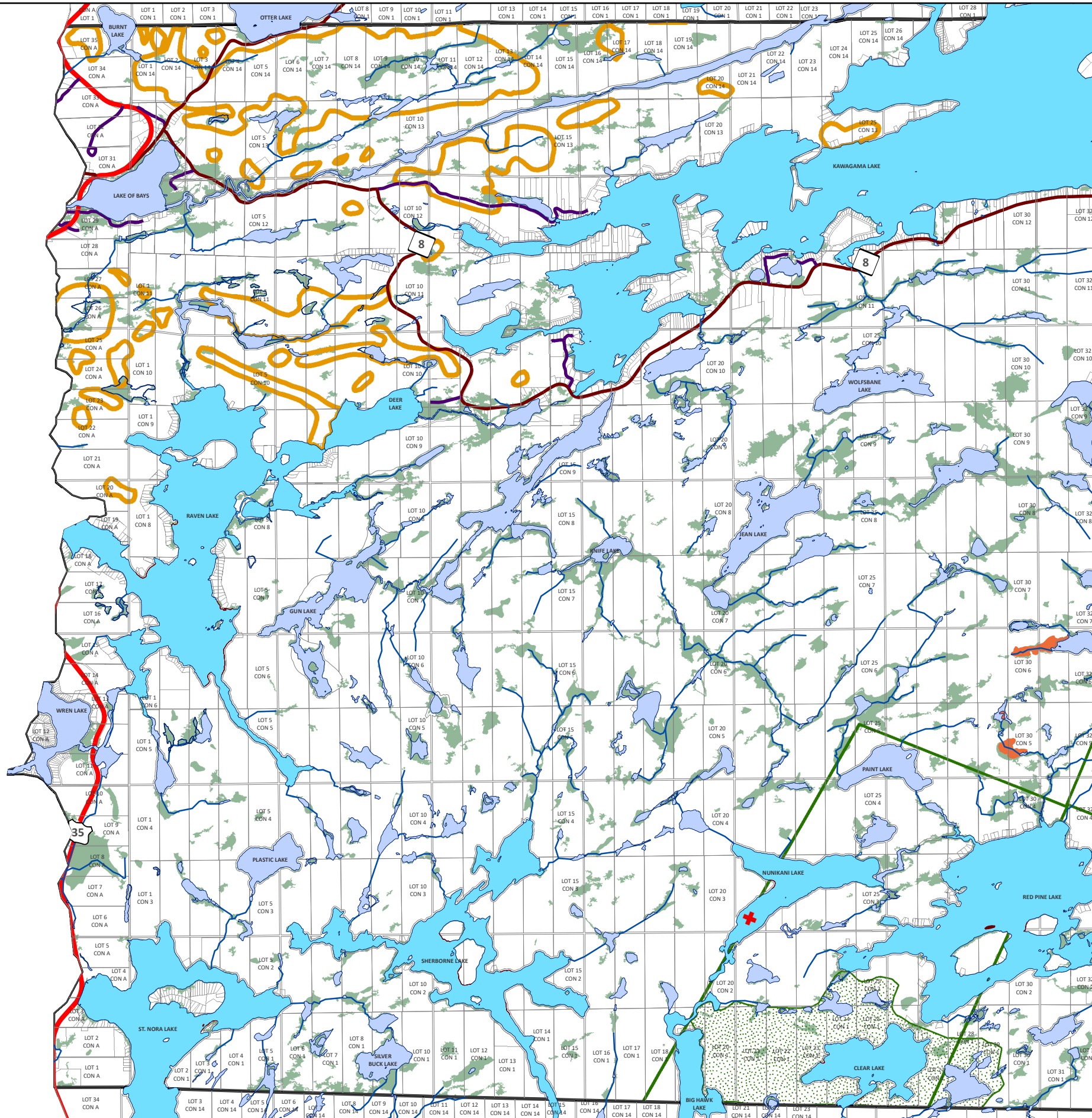
THIS MAP IS FOR ILLUSTRATION PURPOSES ONLY.
THE INFORMATION DISPLAYED ON THESE MAPS HAS BEEN CREATED FROM MINISTRY OF NATURAL RESOURCES, ONTARIO BASE MAPPING & MPAC PROPERTY FABRICS.
WHILE EVERY EFFORT HAS BEEN MADE TO ACCURATELY DEPICT THE INFORMATION, THIS MAP SHOULD NOT BE RELIED ON AS A PRECISED INDICATOR OF LOCATIONS OF FEATURES OR ROADS.

BASE MAPPING SOURCE:
MINISTRY OF NATURAL RESOURCES - ONTARIO BASE MAPPING
MPAC - MUNICIPAL PROPERTY ASSESSMENT CORPORATION



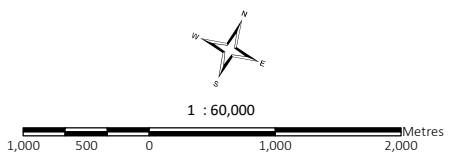
SCHEDULE 'C' - NATURAL HERITAGE FEATURES

GEOGRAPHIC TOWNSHIP OF SHERBORNE



- Spawning Areas
 - Moose Early Wintering Area
 - Moose Aquatics
 - Deer Wintering Area (Stratum 2)
 - ANSI - Life Science
 - Provincially Significant Wetlands
 - Unevaluated Wetlands
 - Lakes
 - County Road
 - Highway
 - Township Road
- THERMAL WATER TEMPERATURES**
- Cold Water
- CAPACITY LEVELS**
- At Capacity

APPROVED
November 28, 2018



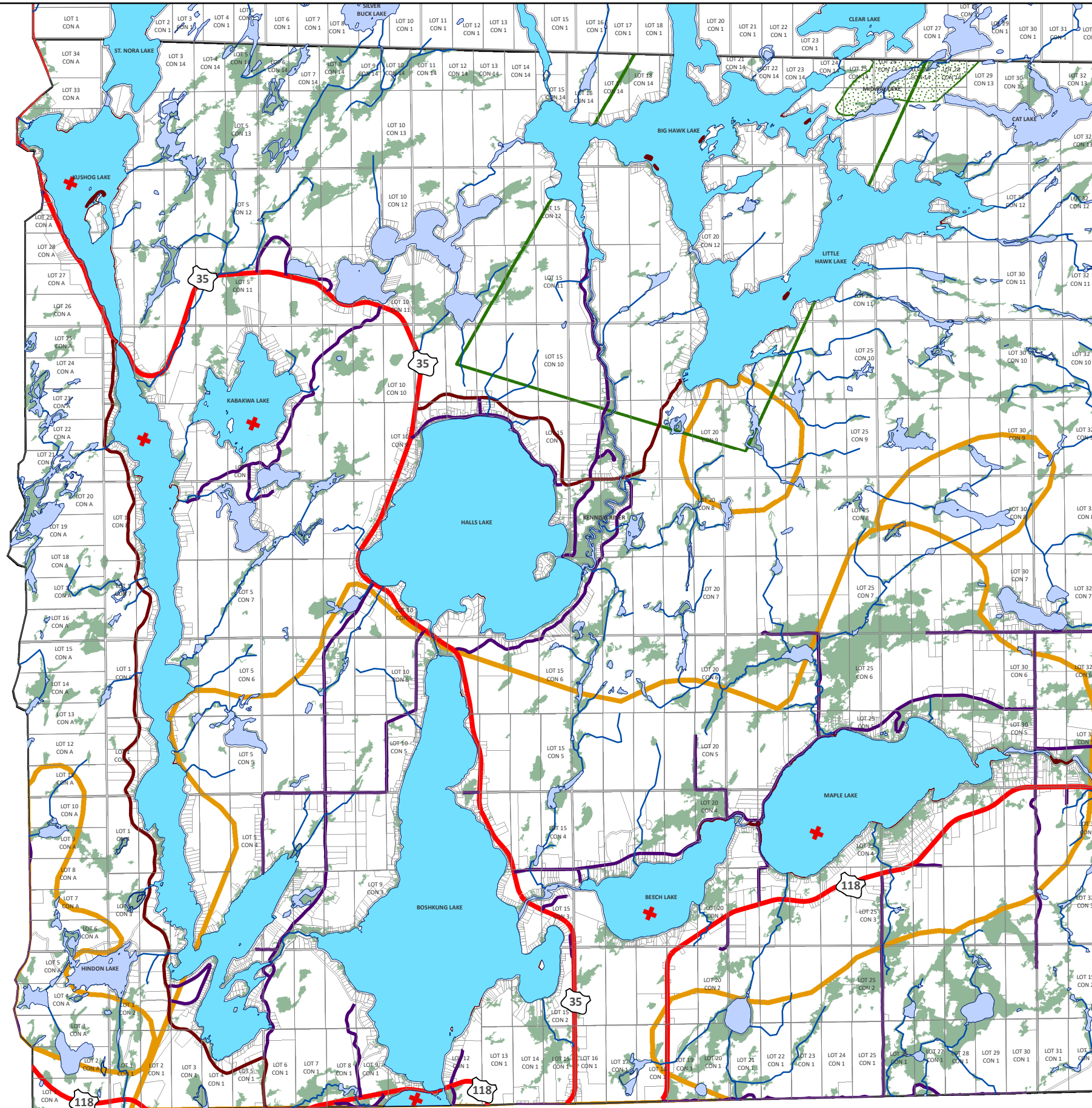
THIS MAP IS FOR ILLUSTRATION PURPOSES ONLY. THE INFORMATION DISPLAYED ON THESE MAPS HAS BEEN CREATED FROM MINISTRY OF NATURAL RESOURCES, ONTARIO BASE MAPPING & MPAC PROPERTY FABRICS. WHILE EVERY EFFORT HAS BEEN MADE TO ACCURATELY DEPICT THE INFORMATION, THIS MAP SHOULD NOT BE RELIED ON AS A PRECISED INDICATOR OF LOCATIONS OF FEATURES OR ROADS.

BASE MAPPING SOURCE: MINISTRY OF NATURAL RESOURCES - ONTARIO BASE MAPPING MPAC - MUNICIPAL PROPERTY ASSESSMENT CORPORATION



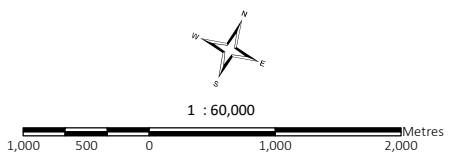
SCHEDULE 'C' - NATURAL HERITAGE FEATURES

GEOGRAPHIC TOWNSHIP OF STANHOPE



- Spawning Areas
 - Moose Early Wintering Area
 - Moose Aquatics
 - Deer Wintering Area (Stratum 2)
 - ANSI - Life Science
 - Provincially Significant Wetlands
 - Unevaluated Wetlands
 - Lakes
 - County Road
 - Highway
 - Township Road
- THERMAL WATER TEMPERATURES CAPACITY LEVELS
- Cold Water
 - + At Capacity

APPROVED
November 28, 2018



THIS MAP IS FOR ILLUSTRATION PURPOSES ONLY.
THE INFORMATION DISPLAYED ON THESE MAPS HAS BEEN CREATED FROM MINISTRY OF NATURAL RESOURCES, ONTARIO BASE MAPPING & MPAC PROPERTY FABRICS.
WHILE EVERY EFFORT HAS BEEN MADE TO ACCURATELY DEPICT THE INFORMATION, THIS MAP SHOULD NOT BE RELIED ON AS A PRECISED INDICATOR OF LOCATIONS OF FEATURES OR ROADS.

BASE MAPPING SOURCE:
MINISTRY OF NATURAL RESOURCES - ONTARIO BASE MAPPING
MPAC - MUNICIPAL PROPERTY ASSESSMENT CORPORATION

