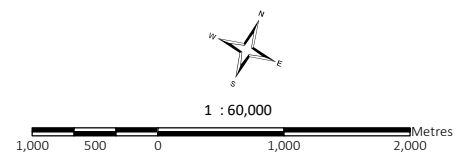


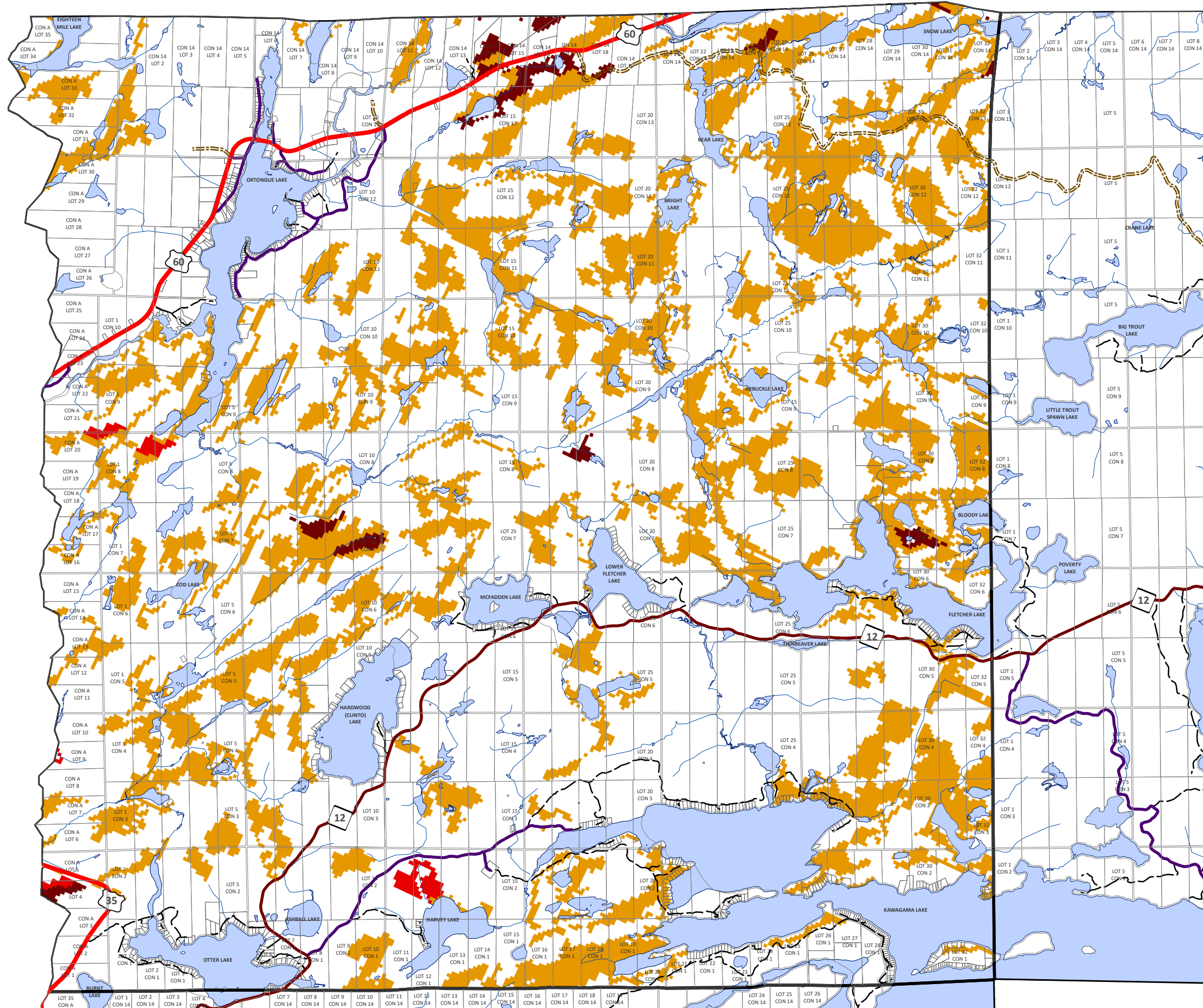
- Extreme
- High
- Needs Evaluation

APPROVED
November 28, 2018



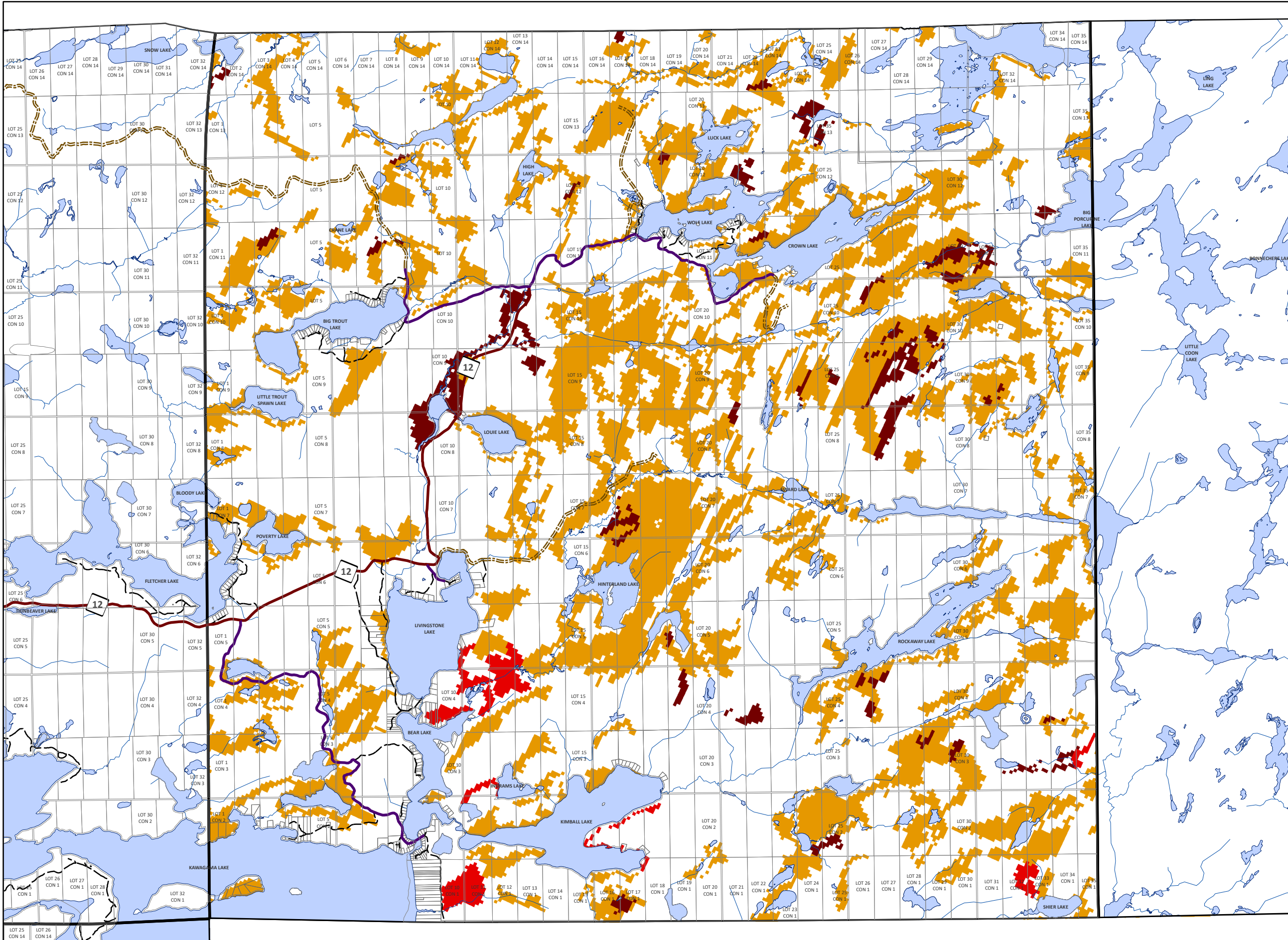
THIS MAP IS FOR ILLUSTRATION PURPOSES ONLY.
THE INFORMATION DISPLAYED ON THESE MAPS HAS BEEN CREATED FROM MINISTRY OF NATURAL RESOURCES, ONTARIO BASE MAPPING & MPAC PROPERTY FABRICS.
WHILE EVERY EFFORT HAS BEEN MADE TO ACCURATELY DEPICT THE INFORMATION,
THIS MAP SHOULD NOT BE RELIED ON AS A PRECISED INDICATOR OF LOCATIONS OF FEATURES OR ROADS.

BASE MAPPING SOURCE:
MINISTRY OF NATURAL RESOURCES - ONTARIO BASE MAPPING
MPAC - MUNICIPAL PROPERTY ASSESSMENT CORPORATION



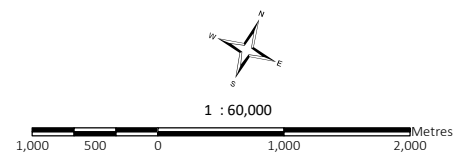
APPENDIX 'A' - WILDLAND FIRE RISK MAPPING

GEOGRAPHIC TOWNSHIP OF LIVINGSTONE



- Extreme
- High
- Needs Evaluation

APPROVED
November 28, 2018



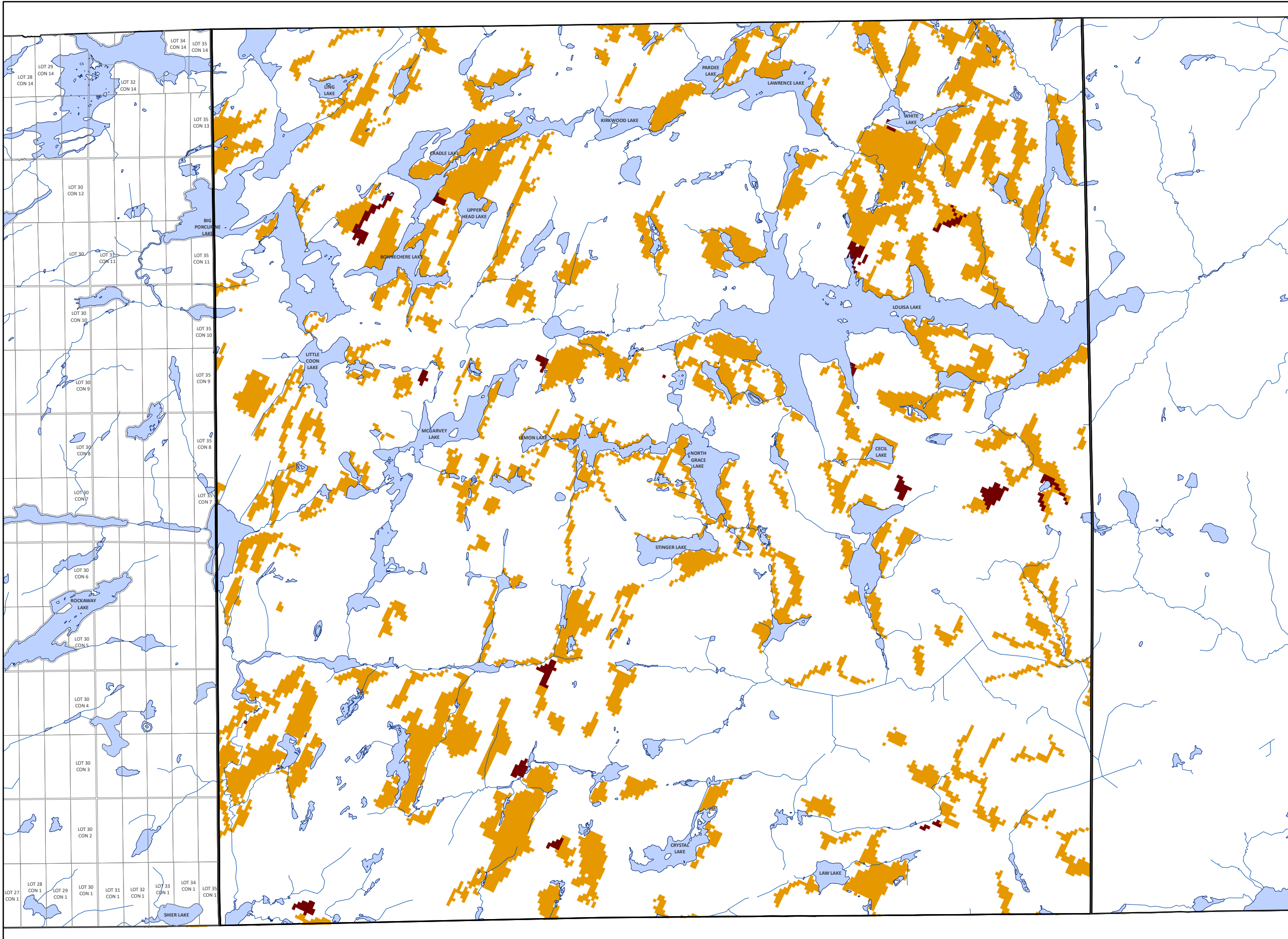
THIS MAP IS FOR ILLUSTRATION PURPOSES ONLY.
THE INFORMATION DISPLAYED ON THESE MAPS HAS BEEN CREATED FROM MINISTRY OF NATURAL RESOURCES, ONTARIO BASE MAPPING & MPAC PROPERTY FABRICS.
WHILE EVERY EFFORT HAS BEEN MADE TO ACCURATELY DEPICT THE INFORMATION,
THIS MAP SHOULD NOT BE RELIED ON AS A PRECISED INDICATOR OF LOCATIONS OF FEATURES OR ROADS.

BASE MAPPING SOURCE:
MINISTRY OF NATURAL RESOURCES - ONTARIO BASE MAPPING
MPAC - MUNICIPAL PROPERTY ASSESSMENT CORPORATION



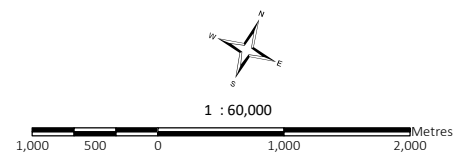
APPENDIX 'A' - WILDLAND FIRE RISK MAPPING

GEOGRAPHIC TOWNSHIP OF LAWRENCE



- Extreme
- High
- Needs Evaluation

APPROVED
November 28, 2018



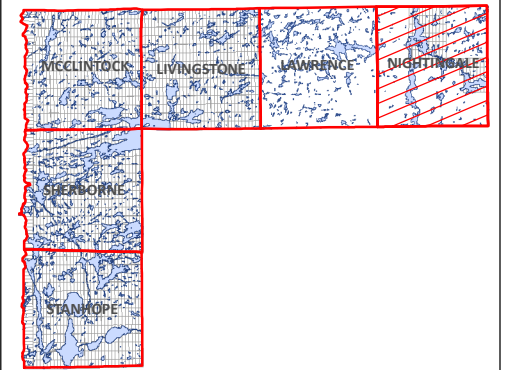
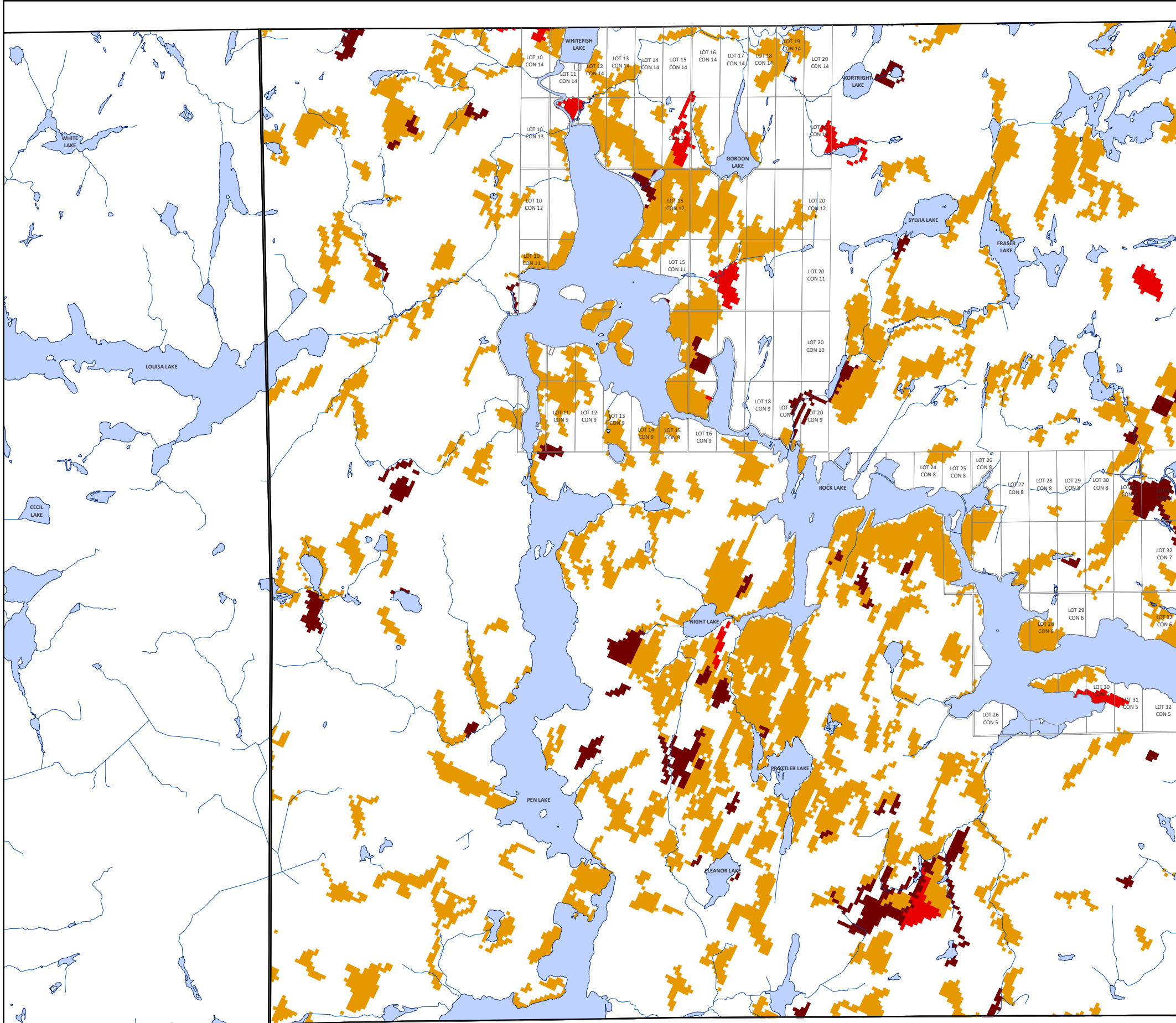
THIS MAP IS FOR ILLUSTRATION PURPOSES ONLY.
THE INFORMATION DISPLAYED ON THESE MAPS HAS BEEN CREATED FROM MINISTRY OF NATURAL RESOURCES, ONTARIO BASE MAPPING & MPAC PROPERTY FABRICS.
WHILE EVERY EFFORT HAS BEEN MADE TO ACCURATELY DEPICT THE INFORMATION,
THIS MAP SHOULD NOT BE RELIED ON AS A PRECISED INDICATOR OF LOCATIONS OF FEATURES OR ROADS.

BASE MAPPING SOURCE:
MINISTRY OF NATURAL RESOURCES - ONTARIO BASE MAPPING
MPAC - MUNICIPAL PROPERTY ASSESSMENT CORPORATION



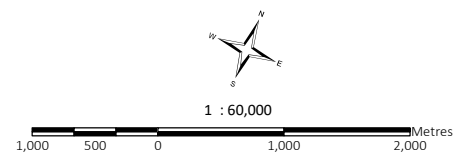
APPENDIX 'A' - WILDLAND FIRE RISK MAPPING

GEOGRAPHIC TOWNSHIP OF NIGHTINGALE



- Extreme
- High
- Needs Evaluation

APPROVED
November 28, 2018



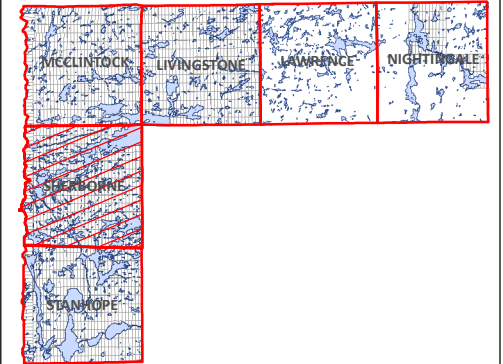
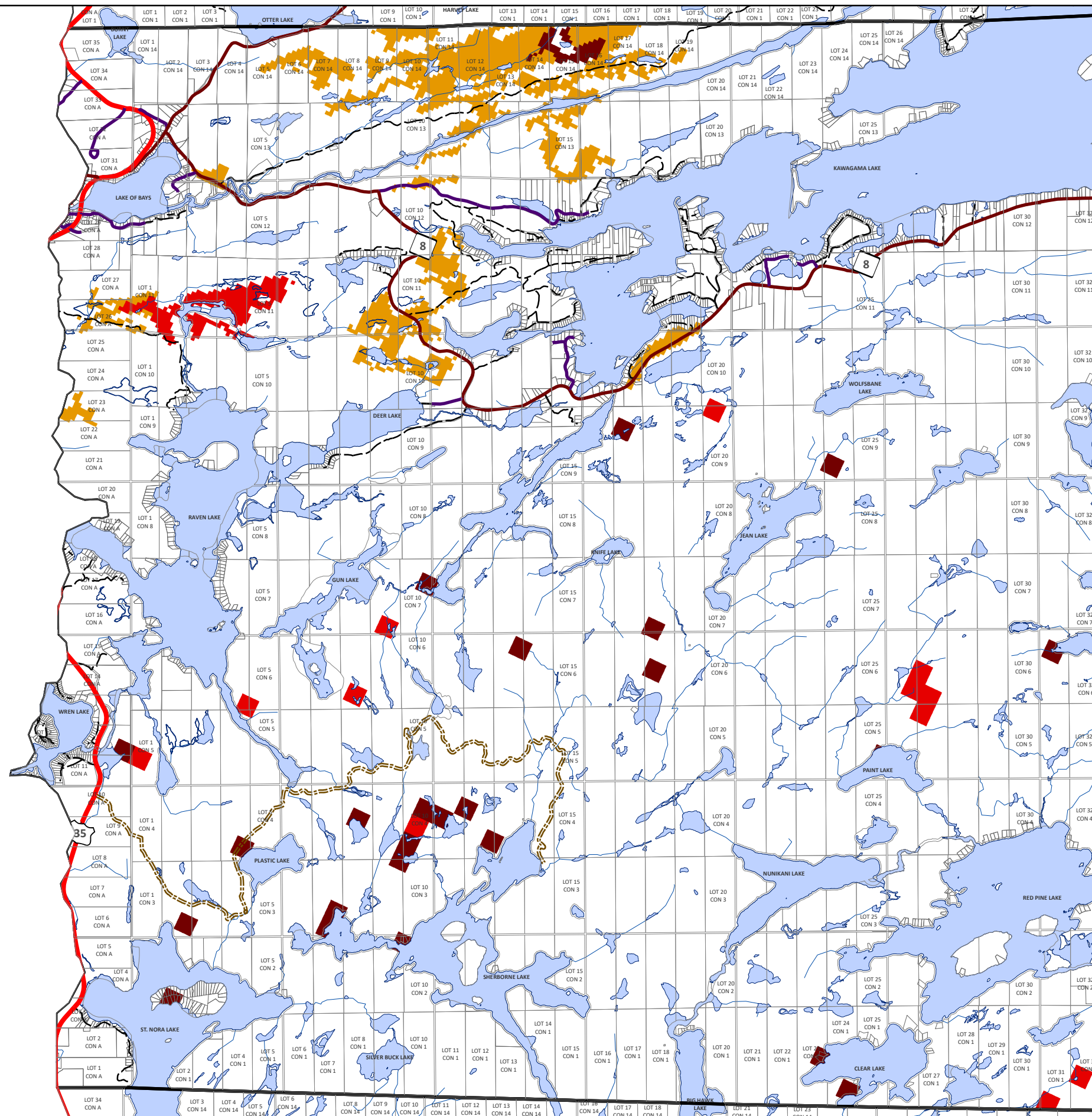
THIS MAP IS FOR ILLUSTRATION PURPOSES ONLY.
THE INFORMATION DISPLAYED ON THESE MAPS HAS BEEN CREATED FROM MINISTRY OF NATURAL RESOURCES, ONTARIO BASE MAPPING & MPAC PROPERTY FABRICS.
WHILE EVERY EFFORT HAS BEEN MADE TO ACCURATELY DEPICT THE INFORMATION,
THIS MAP SHOULD NOT BE RELIED ON AS A PRECISED INDICATOR OF LOCATIONS OF FEATURES OR ROADS.

BASE MAPPING SOURCE:
MINISTRY OF NATURAL RESOURCES - ONTARIO BASE MAPPING
MPAC - MUNICIPAL PROPERTY ASSESSMENT CORPORATION



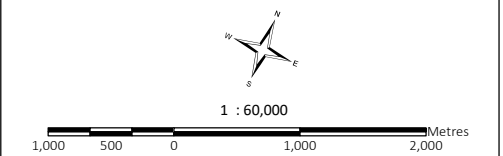
APPENDIX 'A' - WILDLAND FIRE RISK MAPPING

GEOGRAPHIC TOWNSHIP OF SHERBORNE



- Extreme
- High
- Needs Evaluation

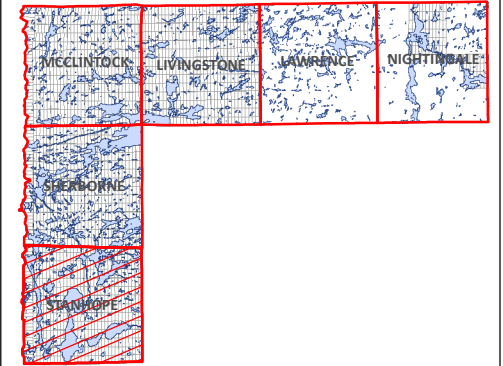
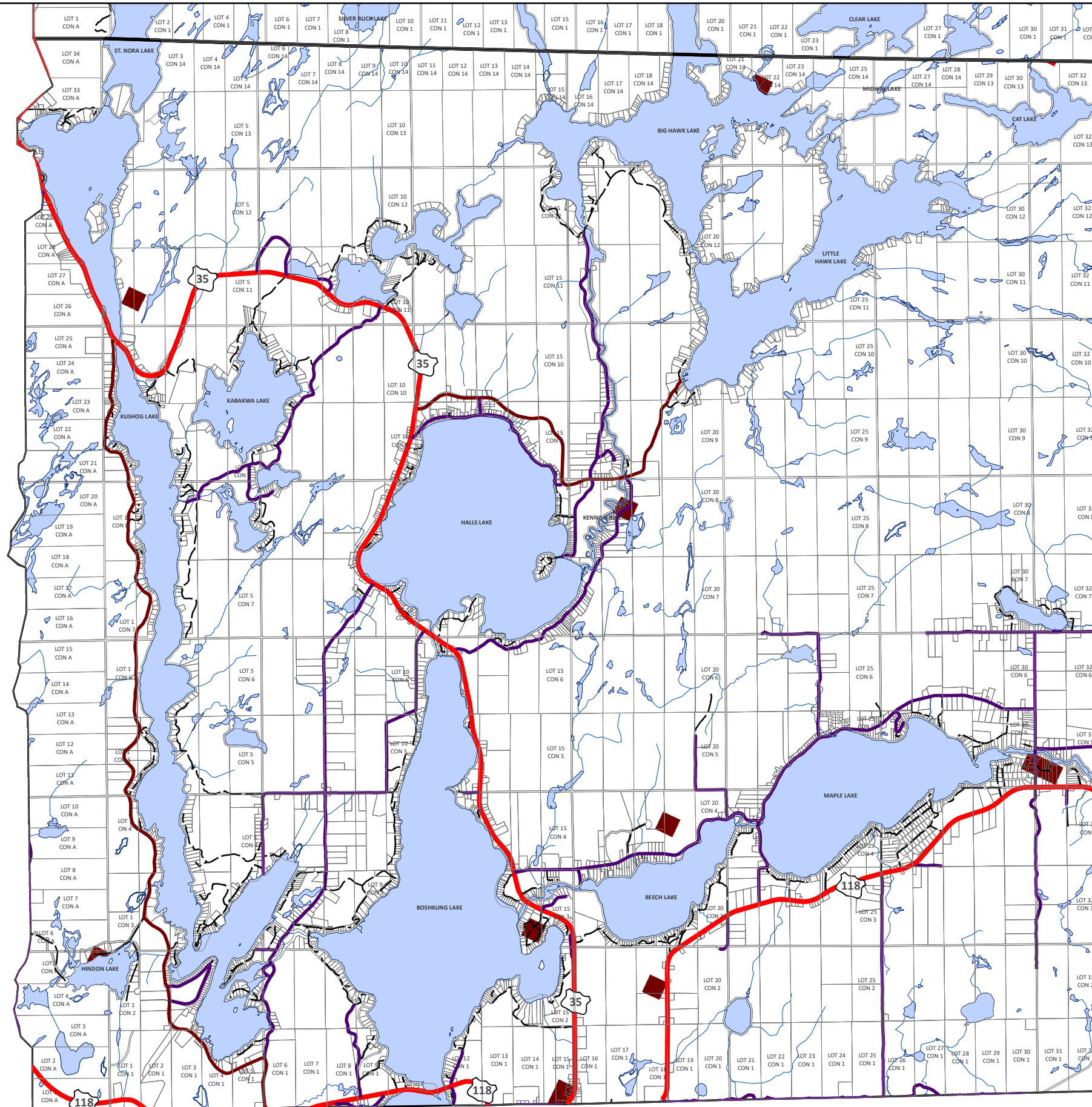
APPROVED
November 28, 2018



THIS MAP IS FOR ILLUSTRATION PURPOSES ONLY.
THE INFORMATION DISPLAYED ON THESE MAPS HAS BEEN CREATED FROM MINISTRY OF NATURAL RESOURCES, ONTARIO BASE MAPPING & MPAC PROPERTY FABRICS.
WHILE EVERY EFFORT HAS BEEN MADE TO ACCURATELY DEPICT THE INFORMATION, THIS MAP SHOULD NOT BE RELIED ON AS A PRECISED INDICATOR OF LOCATIONS OF FEATURES OR ROADS.

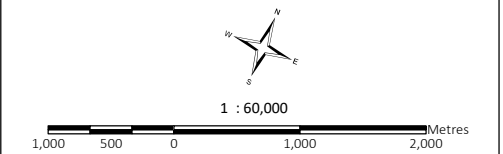
BASE MAPPING SOURCE:
MINISTRY OF NATURAL RESOURCES - ONTARIO BASE MAPPING
MPAC - MUNICIPAL PROPERTY ASSESSMENT CORPORATION





- Extreme
- High
- Needs Evaluation

APPROVED
November 28, 2018



THIS MAP IS FOR ILLUSTRATION PURPOSES ONLY.
THE INFORMATION DISPLAYED ON THESE MAPS HAS BEEN CREATED FROM MINISTRY OF NATURAL RESOURCES, ONTARIO BASE MAPPING & MPAC PROPERTY FABRICS.
WHILE EVERY EFFORT HAS BEEN MADE TO ACCURATELY DEPICT THE INFORMATION, THIS MAP SHOULD NOT BE RELIED ON AS A PRECISED INDICATOR OF LOCATIONS OF FEATURES OR ROADS.

BASE MAPPING SOURCE:
MINISTRY OF NATURAL RESOURCES - ONTARIO BASE MAPPING
MPAC - MUNICIPAL PROPERTY ASSESSMENT CORPORATION

