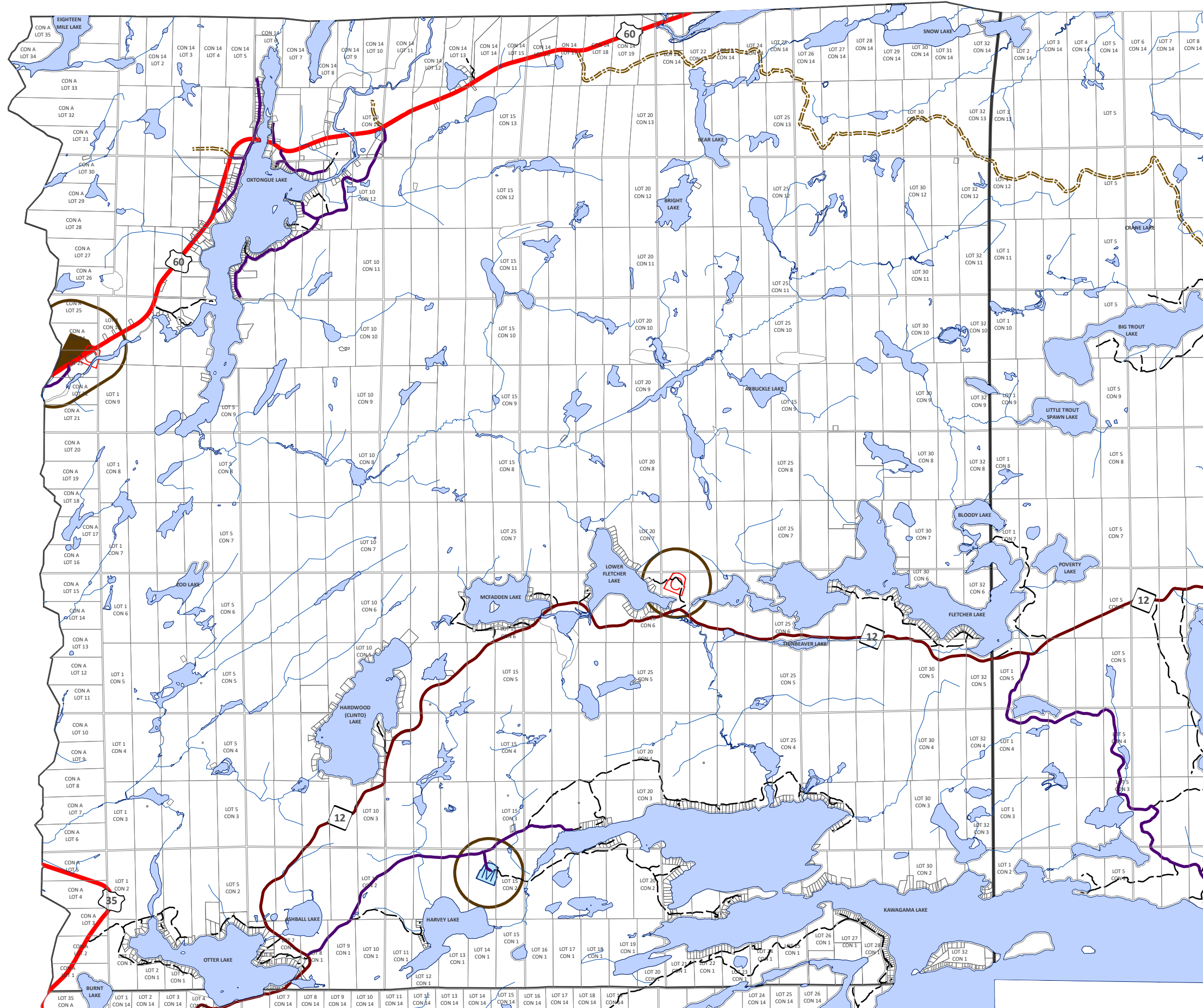
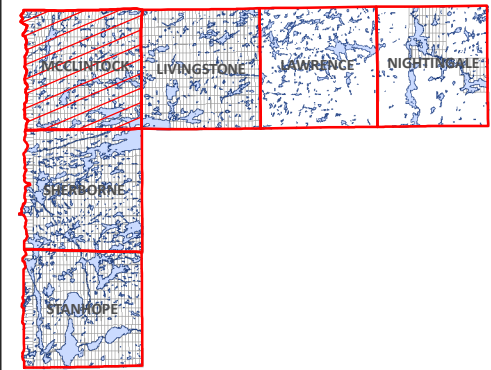


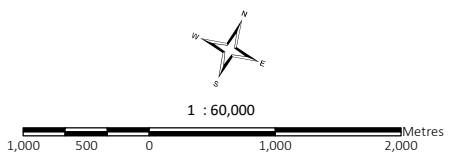
SCHEDULE 'B' - TRANSPORTATION AND INFRASTRUCTURE

GEOGRAPHIC TOWNSHIP OF McCLINTOCK



- Seaplane Base
- Airports
- Closed Landfill Sites
- Municipal Septage Lagoon
- Transfer Station
- Open Landfill Sites
- Influence Area
- County Road
- Highway
- Township Road
- Private Roads
- Access Roads

APPROVED
November 28, 2018



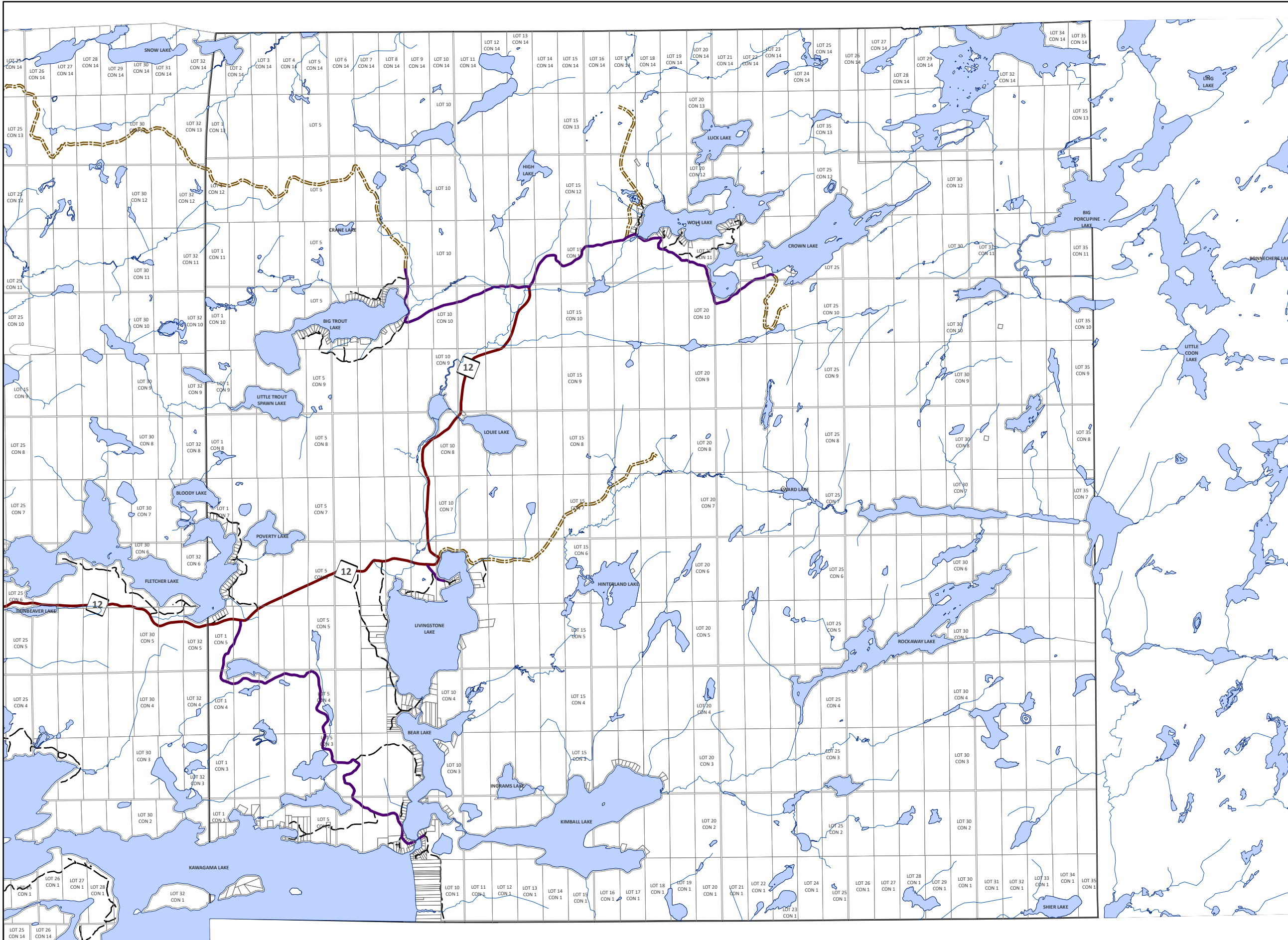
THIS MAP IS FOR ILLUSTRATION PURPOSES ONLY.
THE INFORMATION DISPLAYED ON THESE MAPS HAS BEEN CREATED FROM MINISTRY OF NATURAL RESOURCES, ONTARIO BASE MAPPING & MPAC PROPERTY FABRICS.
WHILE EVERY EFFORT HAS BEEN MADE TO ACCURATELY DEPICT THE INFORMATION, THIS MAP SHOULD NOT BE RELIED ON AS A PRECISED INDICATOR OF LOCATIONS OF FEATURES OR ROADS.

BASE MAPPING SOURCE:
MINISTRY OF NATURAL RESOURCES - ONTARIO BASE MAPPING
MPAC - MUNICIPAL PROPERTY ASSESSMENT CORPORATION



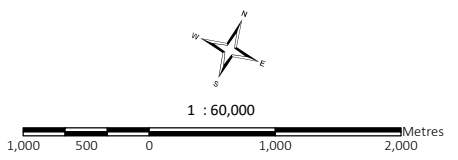
SCHEDULE 'B' - TRANSPORTATION AND INFRASTRUCTURE

GEOGRAPHIC TOWNSHIP OF LIVINGSTONE



- Seaplane Base
- Airports
- Closed Landfill Sites
- Municipal Septage Lagoon
- Transfer Station
- Open Landfill Sites
- Influence Area
- County Road
- Highway
- Township Road
- Private Roads
- Access Roads

APPROVED
November 28, 2018



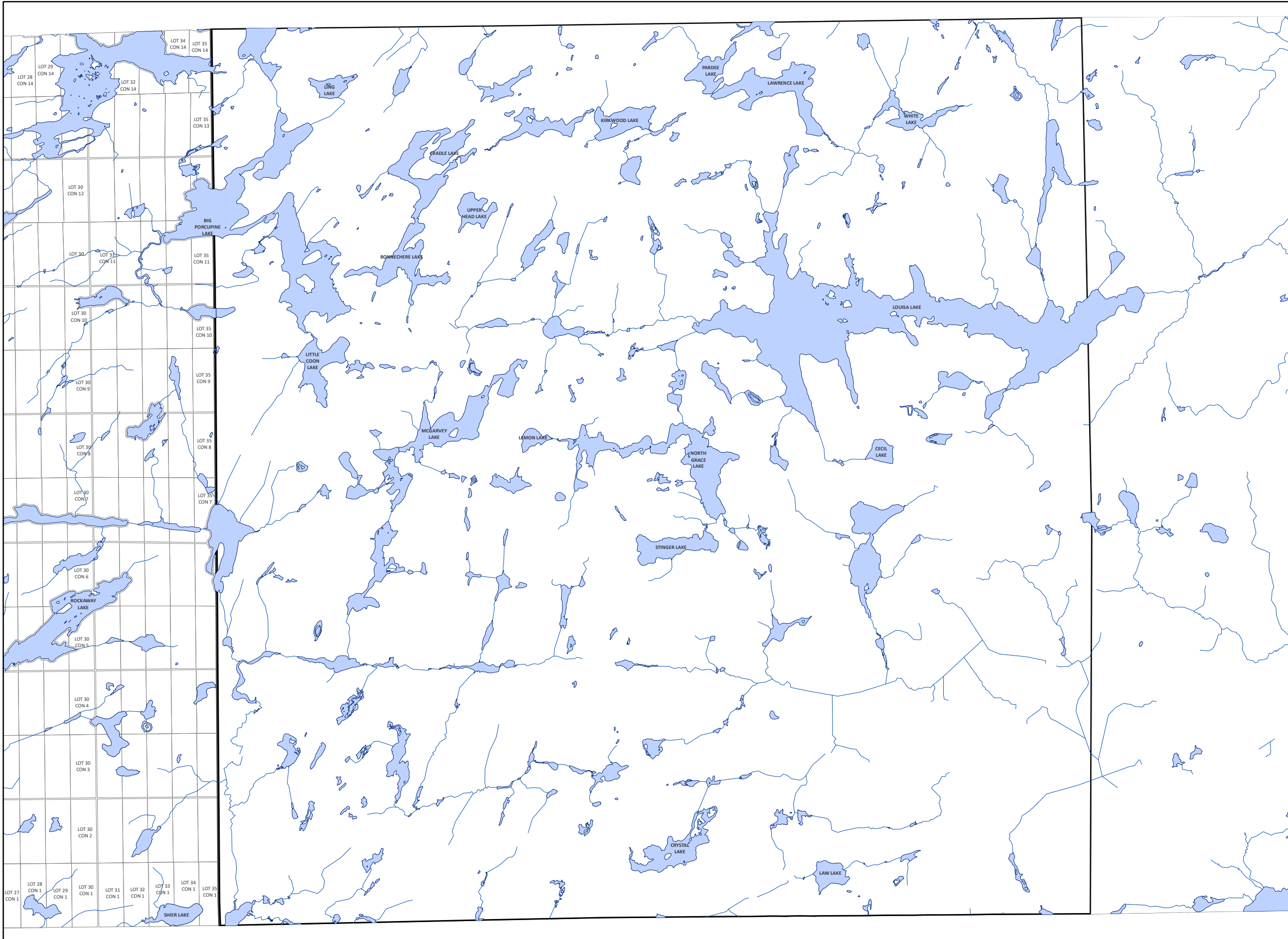
THIS MAP IS FOR ILLUSTRATION PURPOSES ONLY.
THE INFORMATION DISPLAYED ON THESE MAPS HAS BEEN CREATED FROM MINISTRY OF NATURAL RESOURCES, ONTARIO BASE MAPPING & MPAC PROPERTY FABRICS.
WHILE EVERY EFFORT HAS BEEN MADE TO ACCURATELY DEPICT THE INFORMATION, THIS MAP SHOULD NOT BE RELIED ON AS A PRECISED INDICATOR OF LOCATIONS OF FEATURES OR ROADS.


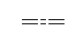
BASE MAPPING SOURCE:
MINISTRY OF NATURAL RESOURCES - ONTARIO BASE MAPPING
MPAC - MUNICIPAL PROPERTY ASSESSMENT CORPORATION



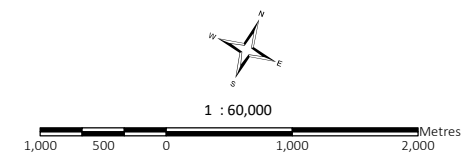
SCHEDULE 'B' - TRANSPORTATION AND INFRASTRUCTURE

GEOGRAPHIC TOWNSHIP OF LAWRENCE



-  Seaplane Base
-  Airports
-  Closed Landfill Sites
-  Municipal Septage Lagoon
-  Transfer Station
-  Open Landfill Sites
-  Influence Area
-  County Road
-  Highway
-  Township Road
-  Private Roads
-  Access Roads

APPROVED
November 28, 2018



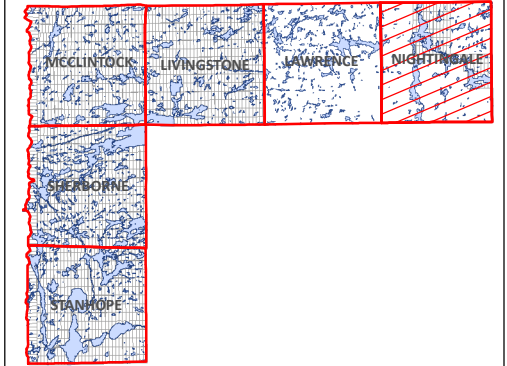
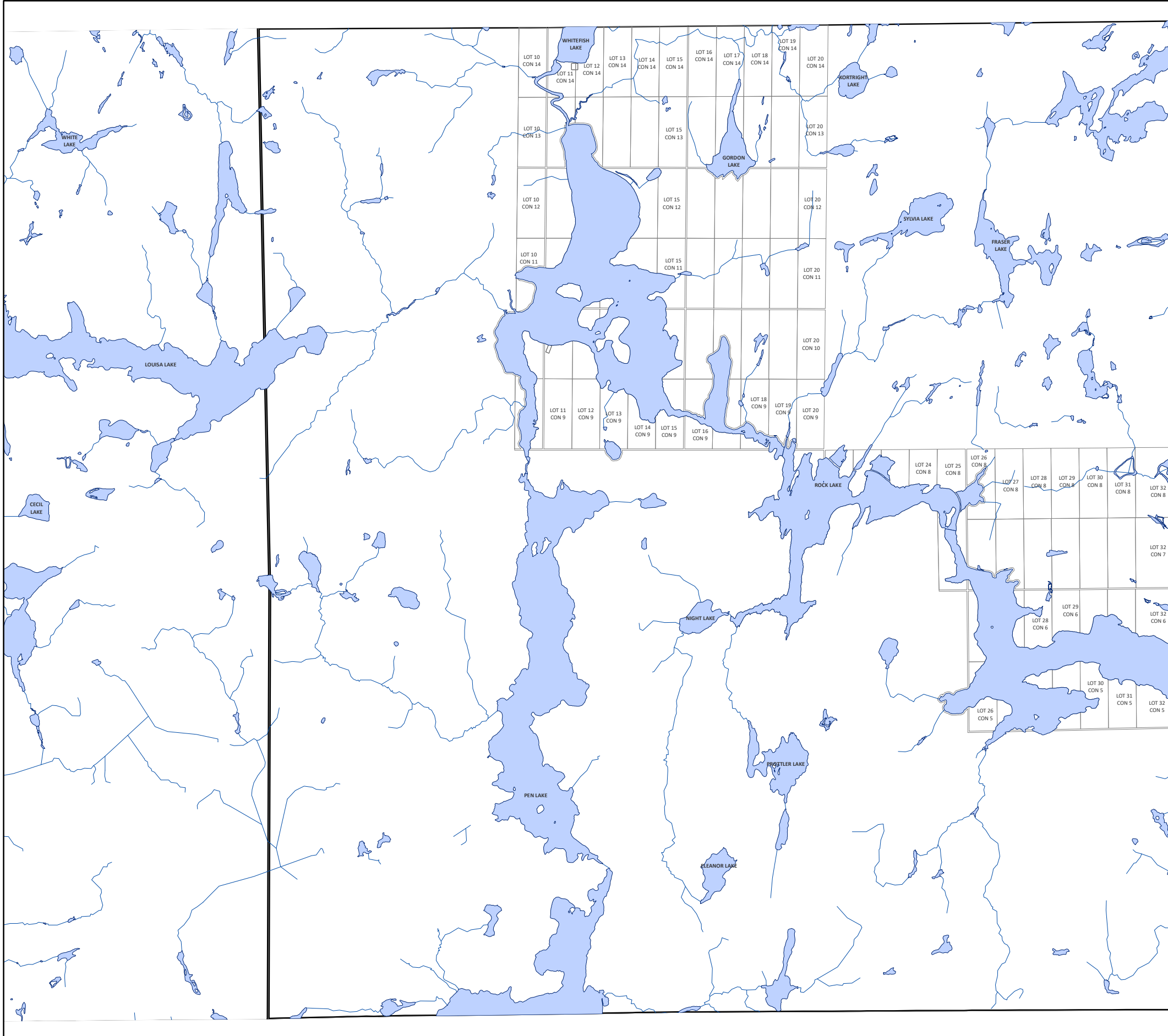
THIS MAP IS FOR ILLUSTRATION PURPOSES ONLY.
THE INFORMATION DISPLAYED ON THESE MAPS HAS BEEN CREATED FROM MINISTRY OF NATURAL RESOURCES, ONTARIO BASE MAPPING & MPAC PROPERTY FABRICS.
WHILE EVERY EFFORT HAS BEEN MADE TO ACCURATELY DEPICT THE INFORMATION,
THIS MAP SHOULD NOT BE RELIED ON AS A PRECISED INDICATOR OF LOCATIONS OF FEATURES OR ROADS.

BASE MAPPING SOURCE:
MINISTRY OF NATURAL RESOURCES - ONTARIO BASE MAPPING
MPAC - MUNICIPAL PROPERTY ASSESSMENT CORPORATION



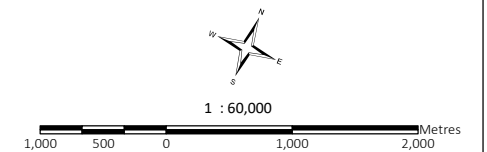
SCHEDULE 'B' - TRANSPORTATION AND INFRASTRUCTURE

GEOGRAPHIC TOWNSHIP OF NIGHTINGALE



-  Seaplane Base
-  Airports
-  Closed Landfill Sites
-  Municipal Septage Lagoon
-  Transfer Station
-  Open Landfill Sites
-  Influence Area
-  County Road
-  Highway
-  Township Road
-  Private Roads
-  Access Roads

APPROVED
November 28, 2018



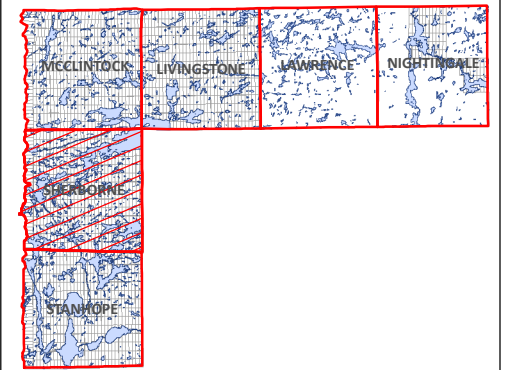
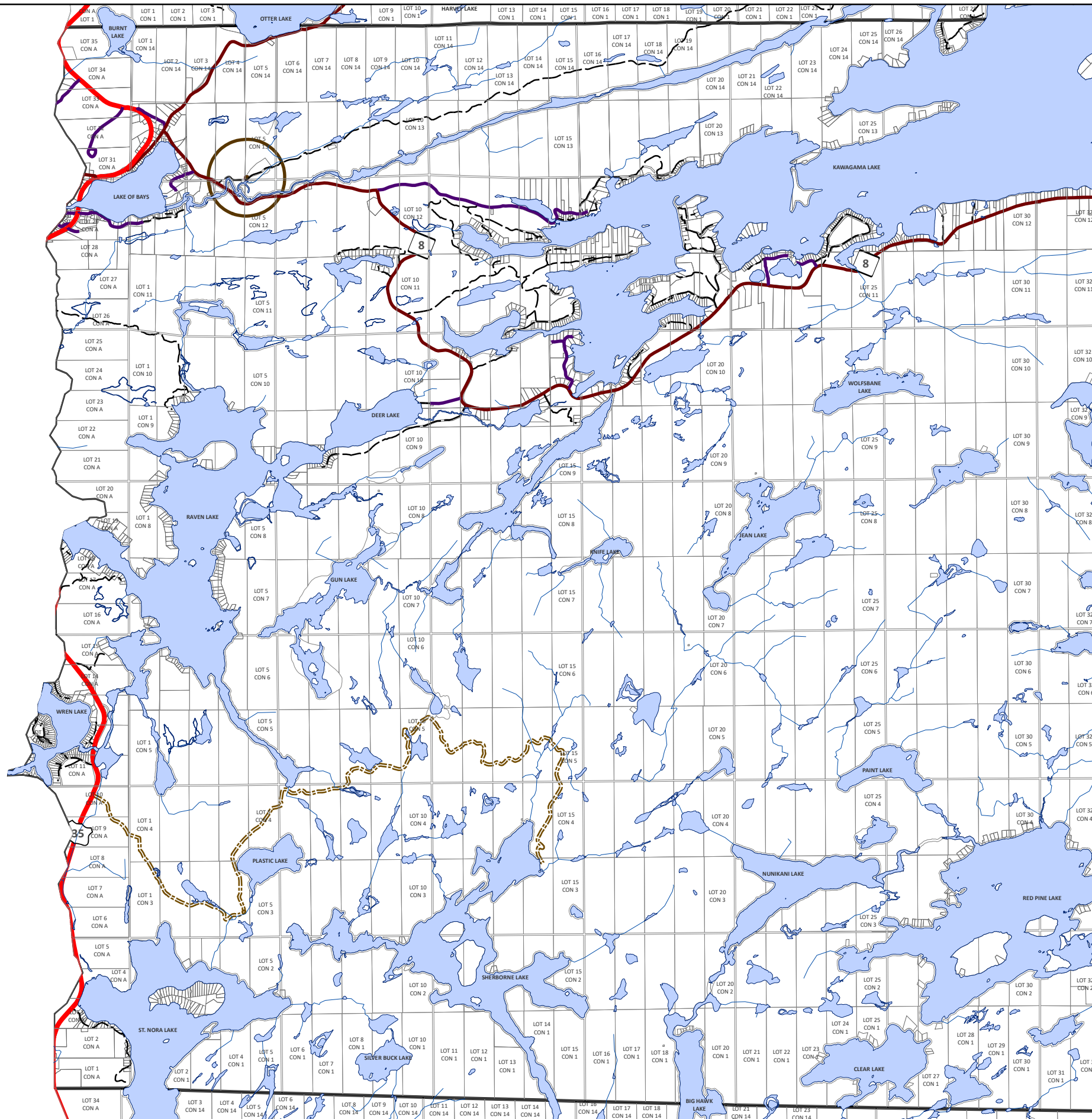
THIS MAP IS FOR ILLUSTRATION PURPOSES ONLY.
THE INFORMATION DISPLAYED ON THESE MAPS HAS BEEN CREATED FROM MINISTRY OF NATURAL RESOURCES, ONTARIO BASE MAPPING & MPAC PROPERTY FABRICS.
WHILE EVERY EFFORT HAS BEEN MADE TO ACCURATELY DEPICT THE INFORMATION, THIS MAP SHOULD NOT BE RELIED ON AS A PRECISE INDICATOR OF LOCATIONS OF FEATURES OR ROADS.


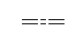
BASE MAPPING SOURCE:
MINISTRY OF NATURAL RESOURCES - ONTARIO BASE MAPPING
MPAC - MUNICIPAL PROPERTY ASSESSMENT CORPORATION



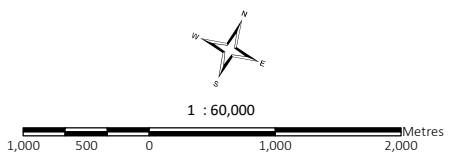
SCHEDULE 'B' - TRANSPORTATION AND INFRASTRUCTURE

GEOGRAPHIC TOWNSHIP OF SHERBORNE



-  Seaplane Base
-  Airports
-  Closed Landfill Sites
-  Municipal Septage Lagoon
-  Transfer Station
-  Open Landfill Sites
-  Influence Area
-  County Road
-  Highway
-  Township Road
-  Private Roads
-  Access Roads

APPROVED
November 28, 2018



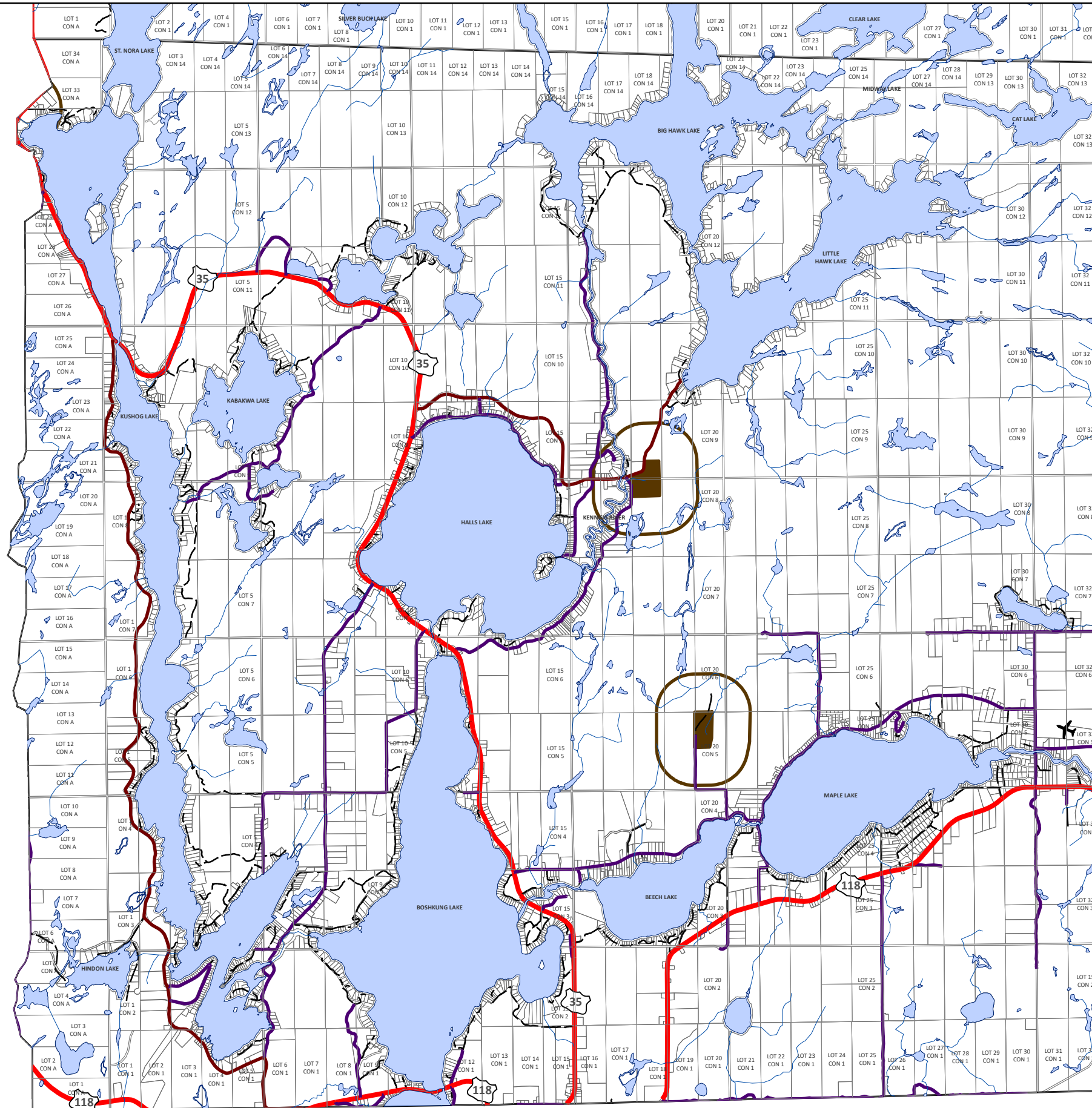
THIS MAP IS FOR ILLUSTRATION PURPOSES ONLY.
THE INFORMATION DISPLAYED ON THESE MAPS HAS BEEN CREATED FROM MINISTRY OF NATURAL RESOURCES, ONTARIO BASE MAPPING & MPAC PROPERTY FABRICS.
WHILE EVERY EFFORT HAS BEEN MADE TO ACCURATELY DEPICT THE INFORMATION, THIS MAP SHOULD NOT BE RELIED ON AS A PRECISED INDICATOR OF LOCATIONS OF FEATURES OR ROADS.

BASE MAPPING SOURCE:
MINISTRY OF NATURAL RESOURCES - ONTARIO BASE MAPPING
MPAC - MUNICIPAL PROPERTY ASSESSMENT CORPORATION



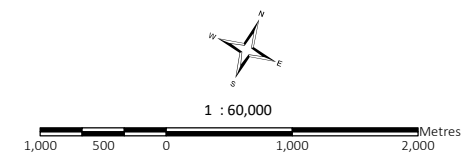
SCHEDULE 'B' - TRANSPORTATION AND INFRASTRUCTURE

GEOGRAPHIC TOWNSHIP OF STANHOPE



-  Seaplane Base
-  Airports
-  Closed Landfill Sites
-  Municipal Septage Lagoon
-  Transfer Station
-  Open Landfill Sites
-  Influence Area
-  County Road
-  Highway
-  Township Road
-  Private Roads
-  Access Roads

APPROVED
November 28, 2018



THIS MAP IS FOR ILLUSTRATION PURPOSES ONLY.
THE INFORMATION DISPLAYED ON THESE MAPS HAS BEEN CREATED FROM MINISTRY OF NATURAL RESOURCES, ONTARIO BASE MAPPING & MPAC PROPERTY FABRICS.
WHILE EVERY EFFORT HAS BEEN MADE TO ACCURATELY DEPICT THE INFORMATION, THIS MAP SHOULD NOT BE RELIED ON AS A PRECISED INDICATOR OF LOCATIONS OF FEATURES OR ROADS.

BASE MAPPING SOURCE:
MINISTRY OF NATURAL RESOURCES - ONTARIO BASE MAPPING
MPAC - MUNICIPAL PROPERTY ASSESSMENT CORPORATION

