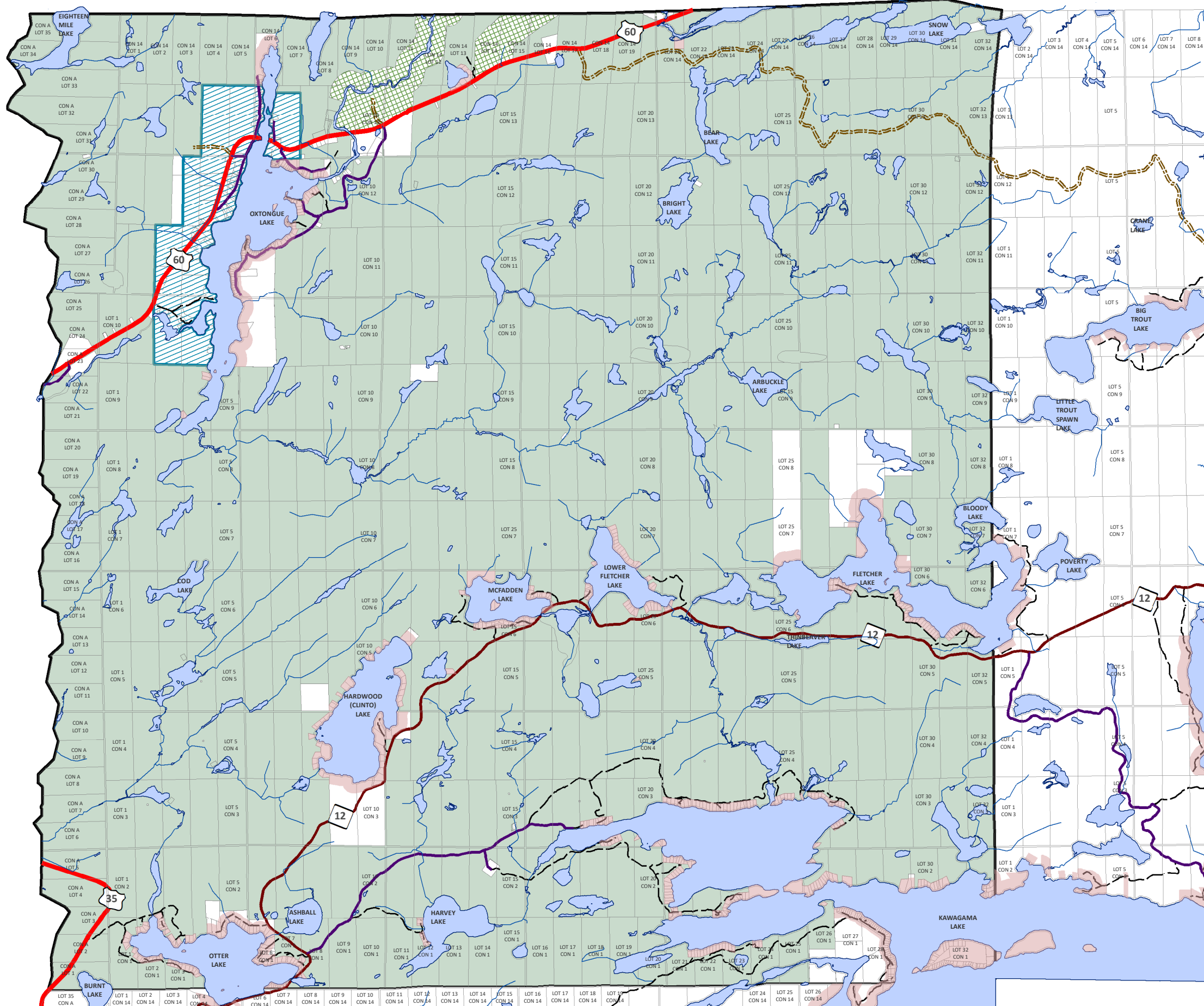
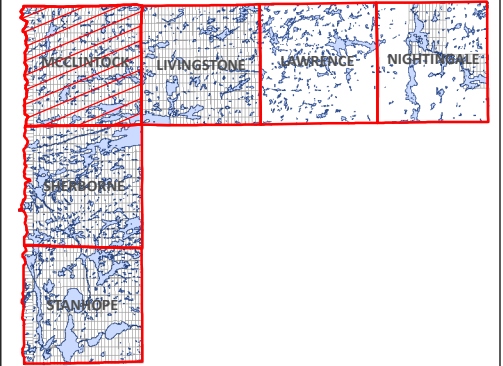




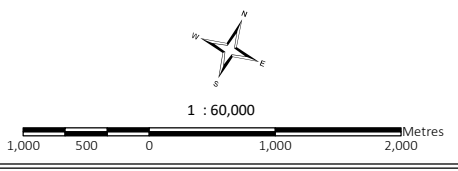
# SCHEDULE 'A' - LAND USE

# GEOGRAPHIC TOWNSHIP OF McCLINTOCK



-  Settlement Areas - Carnarvon, Dorset, Oxtongue Lake
-  Waterfront
-  Rural
-  Special Policy Area - Airport Industrial
-  Wilderness
-  Provincial Parks
-  Conservation Reserves
-  County Road
-  Highway
-  Township Road
-  Private Roads
-  Access Roads

APPROVED  
November 28, 2018



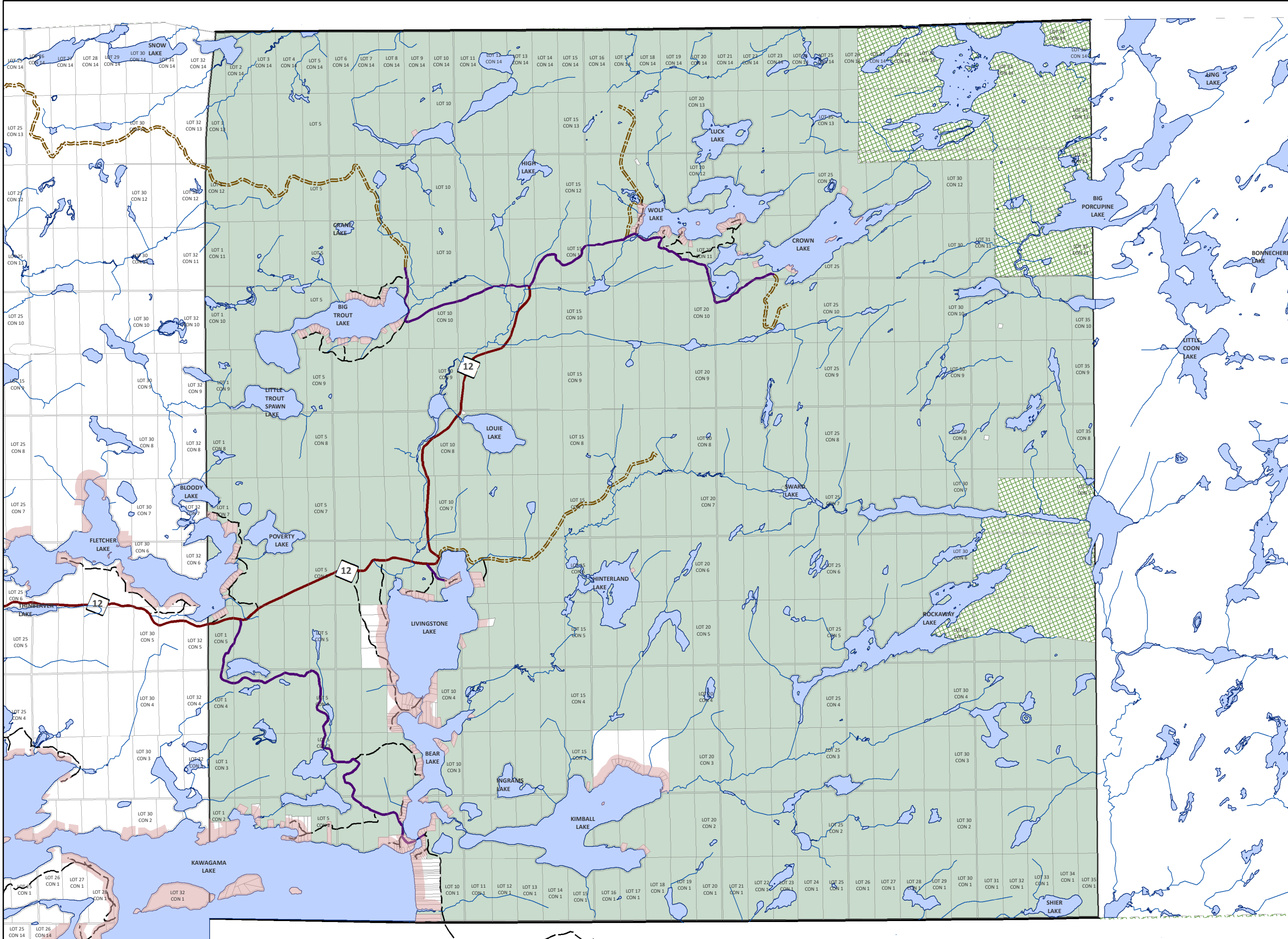
THIS MAP IS FOR ILLUSTRATION PURPOSES ONLY.  
THE INFORMATION DISPLAYED ON THESE MAPS HAS BEEN CREATED FROM MINISTRY OF NATURAL RESOURCES, ONTARIO BASE MAPPING & MPAC PROPERTY FABRICS.  
WHILE EVERY EFFORT HAS BEEN MADE TO ACCURATELY DEPICT THE INFORMATION, THIS MAP SHOULD NOT BE RELIED ON AS A PRECISED INDICATOR OF LOCATIONS OF FEATURES OR ROADS.

BASE MAPPING SOURCE:  
MINISTRY OF NATURAL RESOURCES - ONTARIO BASE MAPPING  
MPAC - MUNICIPAL PROPERTY ASSESSMENT CORPORATION



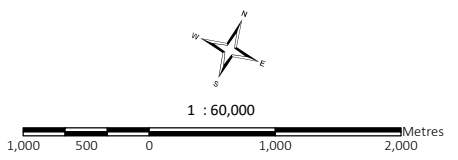
# SCHEDULE 'A' - LAND USE

# GEOGRAPHIC TOWNSHIP OF LIVINGSTONE



- Settlement Areas - Carnarvon, Dorset, Oxtongue Lake
- Waterfront
- Rural
- Special Policy Area - Airport Industrial
- Wilderness
- Provincial Parks
- Conservation Reserves
- County Road
- Highway
- Township Road
- Private Roads
- Access Roads

APPROVED  
November 28, 2018



THIS MAP IS FOR ILLUSTRATION PURPOSES ONLY.  
THE INFORMATION DISPLAYED ON THESE MAPS HAS BEEN CREATED FROM MINISTRY OF NATURAL RESOURCES, ONTARIO BASE MAPPING & MPAC PROPERTY FABRICS.  
WHILE EVERY EFFORT HAS BEEN MADE TO ACCURATELY DEPICT THE INFORMATION, THIS MAP SHOULD NOT BE RELIED ON AS A PRECISED INDICATOR OF LOCATIONS OF FEATURES OR ROADS.

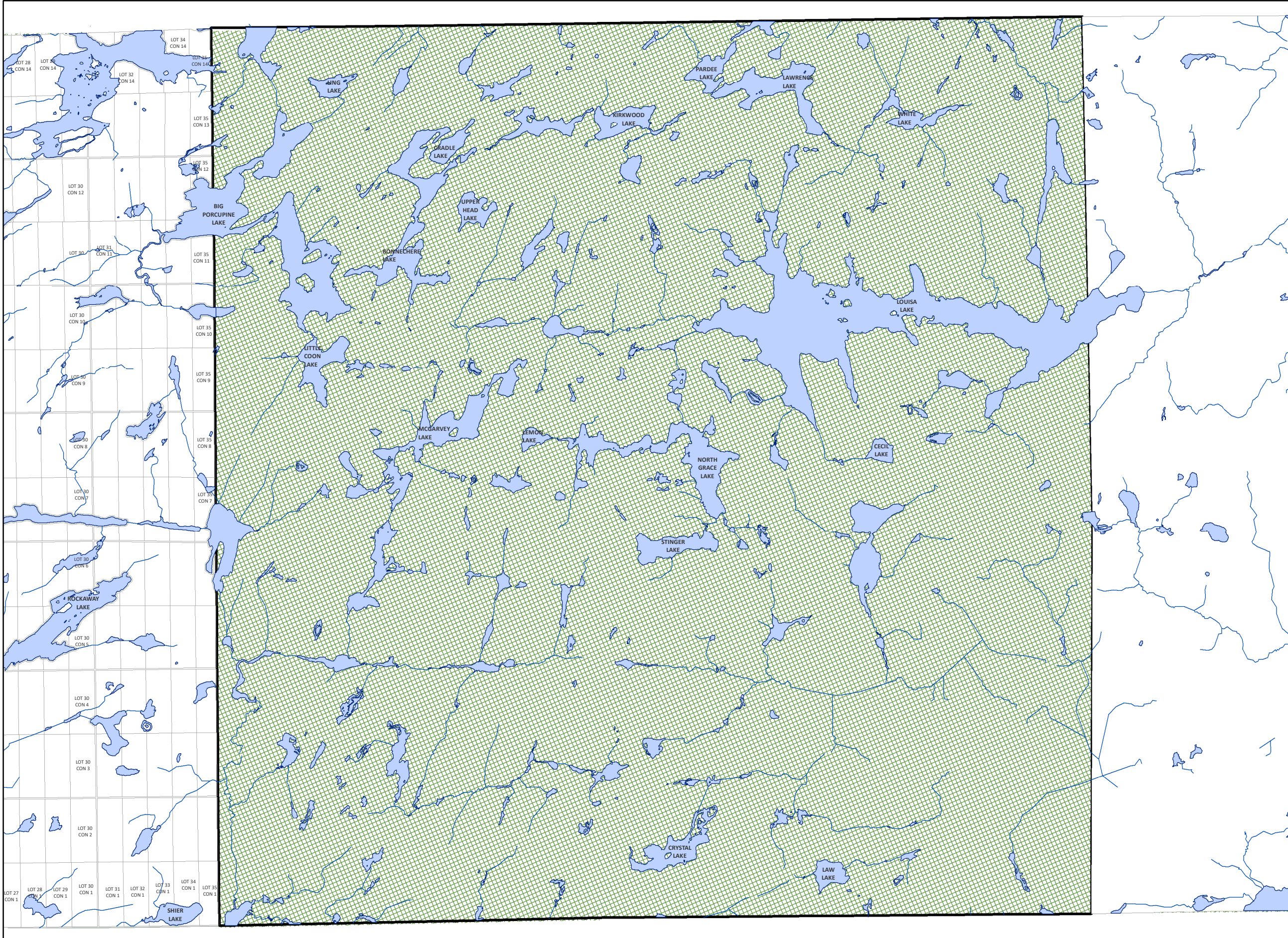
BASE MAPPING SOURCE:  
MINISTRY OF NATURAL RESOURCES - ONTARIO BASE MAPPING  
MPAC - MUNICIPAL PROPERTY ASSESSMENT CORPORATION


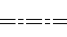




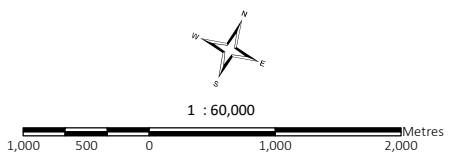
# SCHEDULE 'A' - LAND USE

# GEOGRAPHIC TOWNSHIP OF LAWRENCE



-  Settlement Areas - Carnarvon, Dorset, Oxtongue Lake
-  Waterfront
-  Rural
-  Special Policy Area - Airport Industrial
-  Wilderness
-  Provincial Parks
-  Conservation Reserves
-  County Road
-  Highway
-  Township Road
-  Private Roads
-  Access Roads

APPROVED  
November 28, 2018



THIS MAP IS FOR ILLUSTRATION PURPOSES ONLY.  
THE INFORMATION DISPLAYED ON THESE MAPS HAS BEEN CREATED FROM MINISTRY OF NATURAL RESOURCES, ONTARIO BASE MAPPING & MPAC PROPERTY FABRICS.  
WHILE EVERY EFFORT HAS BEEN MADE TO ACCURATELY DEPICT THE INFORMATION, THIS MAP SHOULD NOT BE RELIED ON AS A PRECISED INDICATOR OF LOCATIONS OF FEATURES OR ROADS.

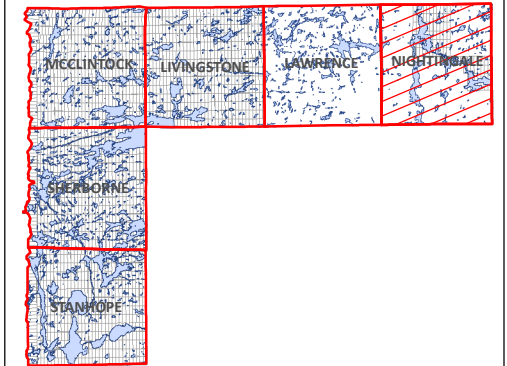
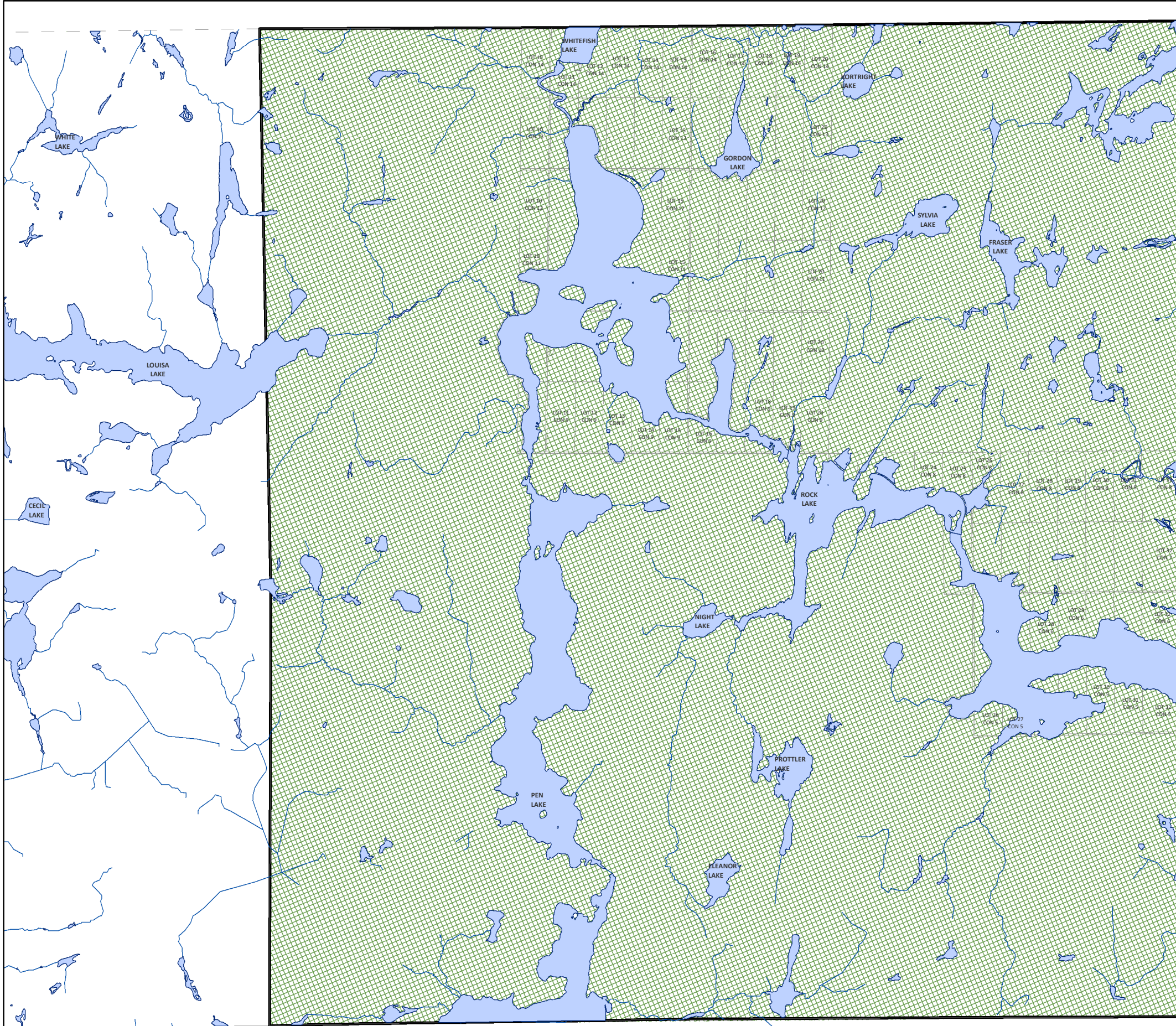
BASE MAPPING SOURCE:  
MINISTRY OF NATURAL RESOURCES - ONTARIO BASE MAPPING  
MPAC - MUNICIPAL PROPERTY ASSESSMENT CORPORATION

















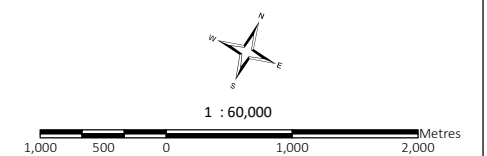
# SCHEDULE 'A' - LAND USE

# GEOGRAPHIC TOWNSHIP OF NIGHTINGALE



-  Settlement Areas - Carnarvon, Dorset, Oxtongue Lake
-  Waterfront
-  Rural
-  Special Policy Area - Airport Industrial
-  Wilderness
-  Provincial Parks
-  Conservation Reserves
-  County Road
-  Highway
-  Township Road
-  Private Roads
-  Access Roads

APPROVED  
November 28, 2018



THIS MAP IS FOR ILLUSTRATION PURPOSES ONLY.  
THE INFORMATION DISPLAYED ON THESE MAPS HAS BEEN CREATED FROM MINISTRY OF NATURAL RESOURCES, ONTARIO BASE MAPPING & MPAC PROPERTY FABRICS.  
WHILE EVERY EFFORT HAS BEEN MADE TO ACCURATELY DEPICT THE INFORMATION,  
THIS MAP SHOULD NOT BE RELIED ON AS A PRECISE INDICATOR OF LOCATIONS OF FEATURES OR ROADS.

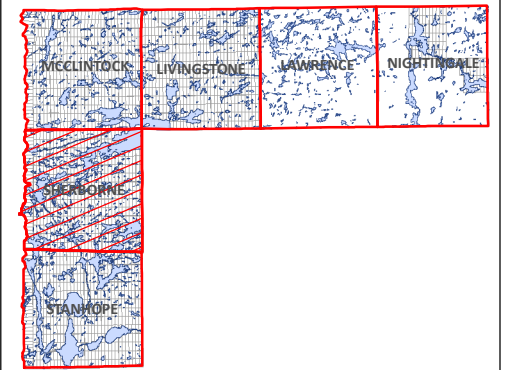
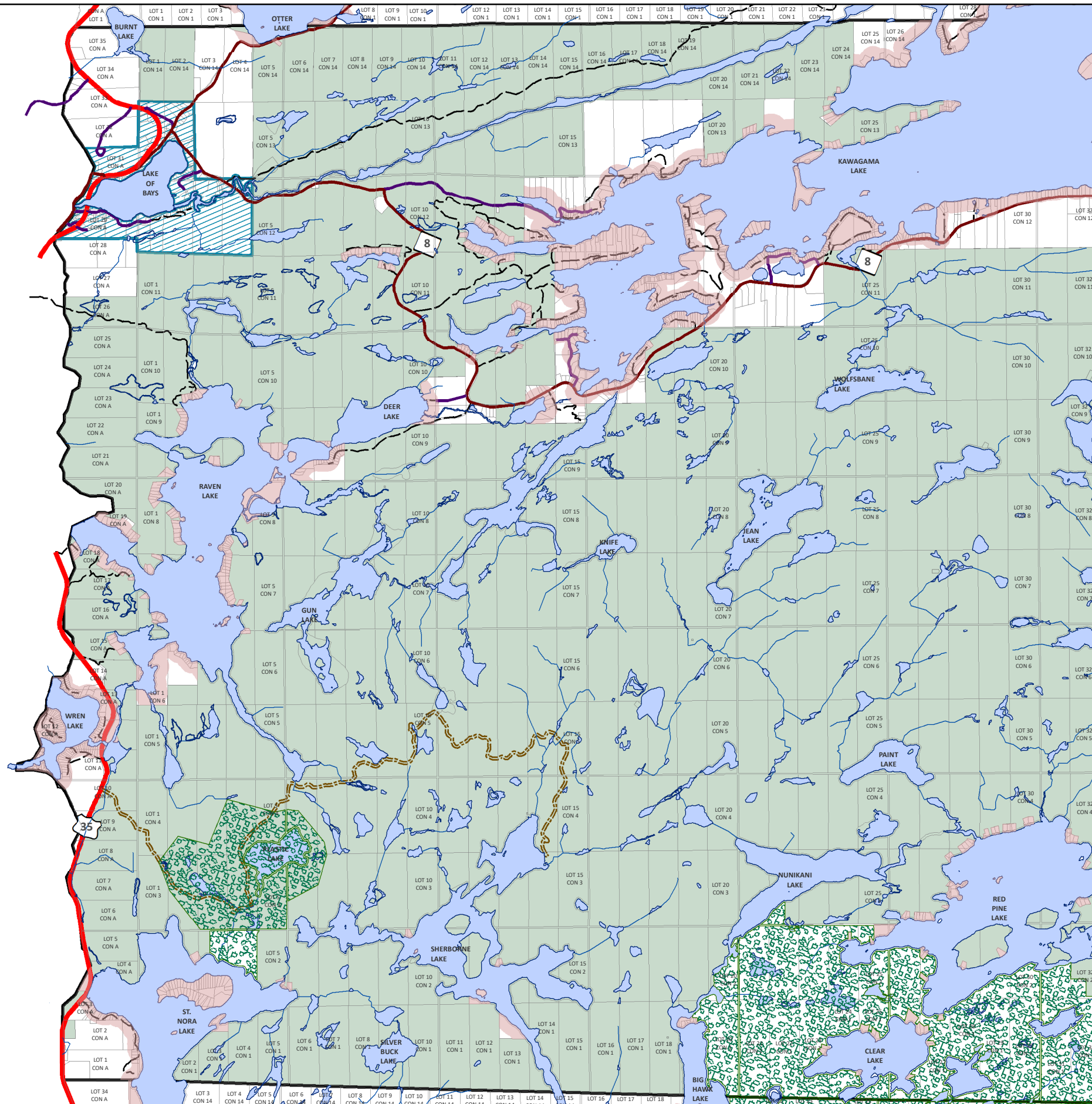
BASE MAPPING SOURCE:  
MINISTRY OF NATURAL RESOURCES - ONTARIO BASE MAPPING  
MPAC - MUNICIPAL PROPERTY ASSESSMENT CORPORATION





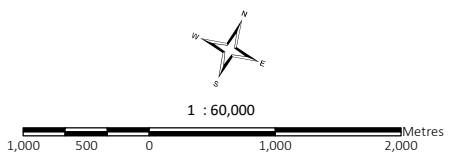
# SCHEDULE 'A' - LAND USE

# GEOGRAPHIC TOWNSHIP OF SHERBORNE



-  Settlement Areas - Carnarvon, Dorset, Oxtongue Lake
-  Waterfront
-  Rural
-  Special Policy Area - Airport Industrial
-  Wilderness
-  Provincial Parks
-  Conservation Reserves
-  County Road
-  Highway
-  Township Road
-  Private Roads
-  Access Roads

APPROVED  
November 28, 2018



THIS MAP IS FOR ILLUSTRATION PURPOSES ONLY.  
THE INFORMATION DISPLAYED ON THESE MAPS HAS BEEN CREATED FROM MINISTRY OF NATURAL RESOURCES, ONTARIO BASE MAPPING & MPAC PROPERTY FABRICS.  
WHILE EVERY EFFORT HAS BEEN MADE TO ACCURATELY DEPICT THE INFORMATION, THIS MAP SHOULD NOT BE RELIED ON AS A PRECISED INDICATOR OF LOCATIONS OF FEATURES OR ROADS.

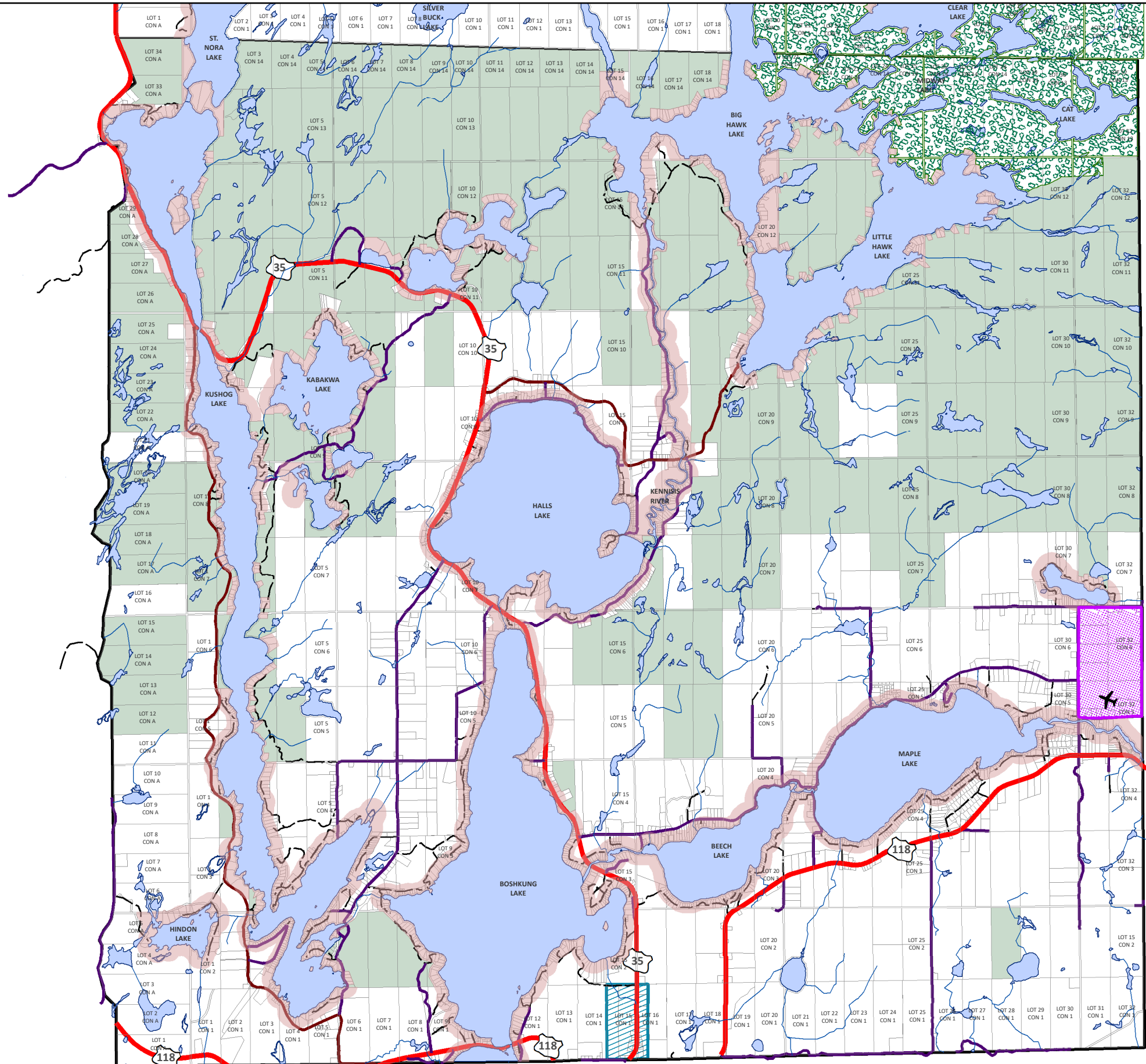
BASE MAPPING SOURCE:  
MINISTRY OF NATURAL RESOURCES - ONTARIO BASE MAPPING  
MPAC - MUNICIPAL PROPERTY ASSESSMENT CORPORATION





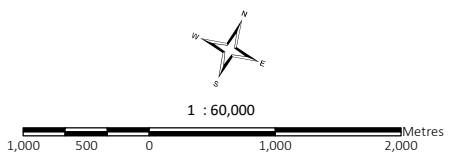
# SCHEDULE 'A' - LAND USE

# GEOGRAPHIC TOWNSHIP OF STANHOPE



- Settlement Areas - Carnarvon, Dorset, Oxtongue Lake
- Waterfront
- Rural
- Special Policy Area - Airport Industrial
- Wilderness
- Provincial Parks
- Conservation Reserves
- County Road
- Highway
- Township Road
- Private Roads
- Access Roads

APPROVED  
November 28, 2018



THIS MAP IS FOR ILLUSTRATION PURPOSES ONLY.  
THE INFORMATION DISPLAYED ON THESE MAPS HAS BEEN CREATED FROM MINISTRY OF NATURAL RESOURCES, ONTARIO BASE MAPPING & MPAC PROPERTY FABRICS.  
WHILE EVERY EFFORT HAS BEEN MADE TO ACCURATELY DEPICT THE INFORMATION,  
THIS MAP SHOULD NOT BE RELIED ON AS A PRECISED INDICATOR OF LOCATIONS OF FEATURES OR ROADS.

BASE MAPPING SOURCE:  
MINISTRY OF NATURAL RESOURCES - ONTARIO BASE MAPPING  
MPAC - MUNICIPAL PROPERTY ASSESSMENT CORPORATION

